

**TOWARDS A DECISION SUPPORT SYSTEM FOR  
HIERARCHICALLY ALLOCATING  
MARKETING RESOURCES ACROSS AND WITHIN  
PRODUCT GROUPS**

by

**Philippe NAERT  
and  
Els GIJSBRECHTS**

**N° 85 / 03**

**Director of Publication :  
Philippe NAERT  
Associate Dean : Research & Development  
INSEAD**

**Printed by INSEAD, Fontainebleau  
France**

**Philippe NAERT**  
Professor of Marketing and  
Associate Dean for Research and Development  
INSEAD

**Els GIJSBRECHTS**  
Assistant  
UFSIA  
University of Antwerp

- \* -

- Thanks are due to Alain Bultez, Greg Carpenter, Marcel Corstjens and Marcel Weverbergh for their comments on earlier versions of this paper. Useful comments were also obtained from participants at the 1984 Marketing Science Conference in Chicago.
- Some preliminary aspects of this study were reported in Naert, Gijsbrechts and Weverbergh (1983).

- \* -

## ABSTRACT

In this paper a marketing planning system for the hierarchical allocation of marketing resources to product groups and products within groups is discussed and illustrated. Linkage between hierarchical decision levels is achieved through constraint coordination.

## INTRODUCTION

In the last ten to twenty years, a large number of marketing models have been developed. Most of these models deal with resource allocation decisions concerning single products or brands. Yet, a majority of companies are of the multiproduct type, and do not treat marketing decisions for single products in isolation. The more descriptive marketing literature has since long paid attention to integration of single product strategies in a multiproduct context. The number of analytical approaches treating this problem in an operational way is, however, very limited. <sup>1</sup>

In this paper we wish to briefly describe the essence of what could be a multiproduct marketing decision support system. It concerns a planning system that essentially deals with the allocation of a global marketing communication budget to different product groups and products within each group.

As a starting point for the analysis, a brief description of the existing planning system is provided. Next, the newly developed approach will be outlined. To preserve confidentiality, the discussion must sometimes be kept rather vague; and financial figures will be expressed in K Belgian francs, where the proportionality factor K is not specified any further.

## THE EXISTING PLANNING SYSTEM

In the company studied, the annual planning cycle starts in the beginning of April and ends in August or September. Roughly, the process can be outlined as follows.

In a first step the marketing director - after consultation with the product managers - decides which products will deserve special attention during the next year. Normally these are "new" products, or products which have been on the market for at most about two years.

In the industry in which the company operates, new product introduction must be backed by very heavy marketing spending. Accordingly new products absorb about 80 % (sometimes up to 90 %) of overall marketing resources. These are mainly used for personal selling, but also for advertising, sales support brochures and other materials.

For the immediate future the rate of new product introduction is expected to drop. As a result more resources will be released for support of existing products.

As far as these existing products are concerned, resource allocation decisions are based in part on the following relationship between market share ( $m$ ), communication share ( $A$ ) and number of years since introduction of the product ( $t'$ ):<sup>2</sup>

$$\frac{m_g^i(t)}{A_g^i(t)} = \alpha_g t_i' \quad (1)$$

This model is based on the following reasoning: for a new product the amount of marketing resources needed to obtain a certain level of market share is considerably higher as compared to the budget required for an "existing" product, which has already gained market share as well as some goodwill.

The company assumes that the proportionality constant  $\alpha_g$  is not product-specific, but valid for the product group as a whole.

To enable a clear comparison with the new system, equation (1) is rewritten as:

$$m_g^i(t) = \alpha_g t_i^! A_g^i(t) + \epsilon_t^i \quad (2)$$

where an error term  $\epsilon_t^i$  has been added. The parameter  $\alpha_g$  in equation (2) can be estimated using ordinary least squares regression (OLS). Group 1 ( $g = 1$ ) is used as illustration. Five annual data points are available for each of the eight products belonging to that group. Using the total of 40 observations for estimation we obtain for the parameter  $\alpha_1$  an estimated value  $\hat{\alpha}_1 = .015$ . The t-statistic corresponding to the zero-value - null hypothesis equals  $t_{\hat{\alpha}_1} = 8.81$ . The coefficient of determination is  $R^2 = .477$ .<sup>3</sup>

Next, every product manager is asked to specify a market share objective  $m_g^i(p)$  for each year  $p$  in the planning period. From equation (1) the communication share  $A_g^i(p)$  needed to reach this objective is then computed for each year.

Total communication expenditures in the product group  $a_{g,tot}(p)$ , for subsequent years, are predicted using simple extrapolation methods. These predicted figures then allow for computation of the marketing resources needed by the company for each product and period:

$$a_g^i(p) = A_g^i(p) a_{g,tot}(p)$$

This figure is of course not arrived at in a purely mechanistic way. But deviations must be explainable by product management. If not, significant deviations between resources demanded by product management and those calculated following the procedure described above, will lead to a rejec-

tion of the budget proposal by the marketing planning manager.

Usually the sum of the submitted budgets  $\sum_{i,g} a_g^i(p)$  will exceed  $a(p)$ , the global communication budget corporate headquarters is willing to spend in the country.

However when the local management then has to adjust its budget proposals downwards, it is somewhat at a loss, because the adjustments are made without explicit reference to market share response functions. The tendency is then quite often to apply the same percentage reduction for each of the products.

Once a budget  $a_g^i(p)$  is determined, it is split up over different marketing communication instruments: personal selling, advertising and sales promotion. This allocation is based on average figures for the industry, independent of the product or product group studied. The ultimately realised expenditures may somewhat deviate from the average figures for practical reasons, such as the fact that the number of salesmen must be an integer.

This is in short a description of the basic elements of the existing planning system. Recently the marketing director and the marketing planning manager have felt a need for improving these existing practices or - as they call it - for introducing some marketing science in the planning process. This is to be the starting point for the development of a new planning system.

While we were not actually involved in designing and implementing a new system, the matching of our interests with those of the company management provided the basis for a mutually useful collaboration: we obtained access to a practical problem, management time and relevant data, whereas management benefited from our reflections and analysis. What follows in the remainder of this paper is the way we felt the planning system could be improved.

## TOWARDS AN IMPROVED PLANNING SYSTEM

The complete planning system can be schematically outlined as in figure 1. Ultimately the marketing director wants to achieve marketing science in every part of the planning process: starting from a systematic treatment of new product

---

insert figure 1 about here

---

introduction decisions (Module I), up to an improved budget allocation to separate marketing instruments for each product (module IV).

It was decided that in a first stage of analysis special attention would be paid to the estimation of product specific market share response functions (module II), and use of these functions for judicious marketing allocation to the different products (module III). The description will therefore be limited to a further analysis of these two modules.

- Module II : Estimation of market share response functions

The aim of module II is to assess, for each of the company's products, a market share response function that is an improvement over equation (2). Figure 2 outlines the basic steps

---

insert figure 2 about here

---

of the module. For new products it is still possible to reserve certain budgets without explicit consideration of response functions (arrow 2 in figure 1). However, the new planning system also allows for estimation of market share relationships for these new products, if one so desires. Such estimation could be based on objective information, if the product has been on the market for a few months. Indeed, the company's marketing research department possesses monthly data on competitive and company products, such that the dif-



fusion of a new product in the market can be closely monitored. If objective data are too small in number or do not yield managerially or statistically meaningful information, subjective data can be generated. For this purpose one could, e.g. let product managers answer the following type of question: given a market share of  $x\%$  in the previous period, and if for the next period a  $y\%$  communication share is planned, what level of market share do you expect to reach in this next period? Our first experience with subjective estimation in that company has been that managers - even those responsible for marketing planning - have a hard time to separate short term from long term effects. <sup>4</sup>

Subjective expectations or objective data constitute in module II the inputs for econometric estimation of market share response functions, for both new and existing products. As indicated previously, these functions should be an improvement over the market share model used in the past (equation (1), (2)). Indeed the latter model exhibits important gaps, such as the fact that market share in a period  $p$  does not depend on share reached in the previous period: using the number of years since introduction as explanatory variable is indeed a very rough way of accounting for lagged effects. Furthermore, for a given value of  $t_i^!$ , market share is assumed proportional to communication share, a supposition which over the years has been countered by empirical evidence.

On the other hand, from an implementation point of view, it is desirable that newly proposed market share functions do not deviate too much from the presently used model, at least not in the early stages of decision support system development. Equation (3) answers this requirement:

$$m_g^i(t) = \alpha_g + \lambda_g m_g^i(t-1) + \beta_g A_g^i(t) + \epsilon_t^i \quad (3)$$

For product group 1 this model yields the following estimation results:

$$\begin{array}{ll} \hat{\alpha}_1 = 0.0089 & t_{\hat{\alpha}_1} = 1.28 \\ \hat{\lambda}_1 = 0.8506 & t_{\hat{\lambda}_1} = 32.81 \\ \hat{\beta}_1 = 0.0926 & t_{\hat{\beta}_1} = 1.44 \\ R^2 = 0.9788 & \end{array}$$

Though the explanatory power has clearly increased compared to model (2), analysis of the residuals in figure 3 reveals that product 3 significantly differs from the rest of the group.

---

insert figure 3 about here

---

After inclusion of a separate constant term for product 3,  $\alpha_1^3$ , the following results are obtained:

$$\begin{array}{ll} \hat{\alpha}_1 = 0.0022 & t_{\hat{\alpha}_1} = 0.08 \\ \hat{\alpha}_1^3 = 0.0520 & t_{\hat{\alpha}_1^3} = 10.72 \\ \hat{\lambda}_1 = 0.8572 & t_{\hat{\lambda}_1} = 73.30 \\ \hat{\beta}_1 = 0.0830 & t_{\hat{\beta}_1} = 2.86 \\ R^2 = 0.9958 & \end{array}$$

For the product group considered, it certainly pays off to take into account the unique characteristics of one of the products, not in the first place in terms of explanatory power, but primarily in view of the increased reliability of the estimated parameters.

Of course, equation (3) is only one of many possible forms of market share function. Given its simplicity and high descriptive validity, it is certainly very appealing. Keeping in mind, however, that the estimated market share relationships will have to serve as a basis for allocation in module III, it is interesting to examine some additional model characteristics.

First, we note that, since the estimated parameters are not product, but group-specific (except for  $\alpha_1^3$ ), and given its additive form, equation (3) implies equal gains in market share from increased communication share for every product in the group. Secondly, for fixed levels of  $a_{g,tot}(t)$ , market share for a product becomes a linear function of communication expenditures for the product. <sup>5</sup>

It should be clear that the specification is not imposed, but comes about in consultation with the management, based on empirical findings, theoretical considerations, and the desire not to make models more complex than is indicated by the ultimate objectives management has in using them.

One of the managers had more confidence in S-like market share relations, for which the following specification was proposed:

$$m_g^i(t) = \gamma_g m_g^i(t-1) + \beta_g (1 - \alpha_g m_g^i(t-1)) \cdot \frac{A_g^i(t)^{\delta_g}}{\xi_g + A_g^i(t)^{\delta_g}} + \epsilon_t \quad (4)$$

Within the class of logistic specifications, model (4) is only one of many possible ways of expressing the relation between market share, lagged share and communication share. Some of its desirable characteristics are the following:

- i. The interaction effect between  $m_g^i(t-1)$  and  $A_g^i(t)$  is modelled in a flexible way by introducing the parameters  $\beta_g$  and  $\alpha_g$ . Such flexibility is needed because the interaction consists of several components: first, there is a negative impact in the sense that "loyal loyal" buyers (i.e. the fraction  $\gamma_g m_g^i(t-1)$ ) disappear from the potential market of persons to be convinced through  $A_g^i(t)$ . Second, there may be a positive impact, as persons who have bought the product in the previous period but are not "loyal loyal" (i.e. the fraction  $(1-\gamma_g)(m_g^i(t-1))$ ) can be more easily convinced to use the product again if  $A_g^i(t)$  is high. Also the effect of  $A_g^i(t)$  can serve as reinforcement to word-of-mouth communication on previous non-users (i.e. the fraction  $1 - m_g^i(t-1)$ ). The net

interaction effect may thus be either positive or negative. A priori, however, a model describing the impact of  $m_g^i(t-1)$  and  $A_g^i(t)$  on  $m_g^i(t)$  should allow for both positive and negative interdependence. Adding the two parameters  $\beta_g$  and  $\alpha_g$  provided the necessary flexibility.

- ii. The data requirements are not dramatically increased as compared to equation (3), because the model parameters are group specific. At the same time, equation (4) allows for varying communication effectiveness across products in a given group, since it now depends on a product's previous market share.
- iii. It is easy to see that for given  $\alpha_{g,tot}(p)$ , the specification remains nonlinear in communication budgets. If  $\delta_g$  is larger than 1, the function will be S-shaped, whereas for  $\delta_g$  between 0 and 1, it shows decreasing returns over the whole range of communication budgets.

Given this nonlinearity, parameterization of equation (4) requires the adoption of an appropriate nonlinear estimation routine. The relationship is estimated for product group 1, after inclusion of a constant term  $\alpha_1^3$  for product 3, and under the assumption that for  $A_g^i(t)$  equal to 1, long term market share of the latter product equals 1. This assumption, which seems logical since product 3 possesses exceptional characteristics, reduces the number of parameters to be estimated by one, since it implies that  $\beta_1$  can be computed as

$$\beta_1 = \frac{(1 - \gamma_1 - \alpha_1^3)(1 + \xi_1)}{(1 - \alpha_1)}$$

The following estimation results are obtained:

$$\begin{array}{ll} \hat{\gamma}_1 = .441 & t_{\hat{\gamma}_1} = 2.199 \\ \hat{\delta}_1 = .955 & t_{\hat{\delta}_1} = 9.950 \\ \hat{\xi}_1 = .0281 & t_{\hat{\xi}_1} = 1.308 \end{array}$$

$$\begin{aligned} \hat{\alpha}_1^3 &= .054 & t_{\hat{\alpha}_1^3} &= 18.102 \\ \hat{\alpha}_1 &= -33.82 & t_{\hat{\alpha}_1} &= -1.891 \\ R^2 &= .9983 \end{aligned}$$

With an  $R^2$  of .9983 , the model's explanatory power again appears to be high.

Figures 4a, 4b and 4c provide a graphical representation of the estimated market share evolution for products 1,2 and 3, resp. Given the product's current market share level, each figure depicts market share in the following year as a function of communication share in that year. Long term (equilibrium) market share relationships are also drawn. Since  $\delta_g$  is smaller than 1, each function shows decreasing returns to scale.

As indicated before, and following our specification, the long term effectiveness of communication efforts is much higher for product 3 than for the other products. Another notable point is that the long and short term relationships for product 1 have no intercept: no matter how much is spent on this product, market share will always drop below the current level. This is explained by the recent introduction of a superior competitor, product 3, in the market. Returning to the estimation results, we note that the t-values - which have only asymptotic meaning here since a nonlinear estimation technique was used - point to low statistical significance of some parameters. A closer look at the data set suggests that we are confronted with a multicollinearity problem. Since this prohibits the estimation routine from making a clear cut distinction between the effects of explanatory factors in the model, subjective adjustment of some parameters might be called for.

As indicated in figure 2, module II of the new planning system builds in the possibility of subjectively adapting model

parameters or data. Changing model parameters is not an arbitrary process, but comes down to bringing into account additional information not present in the original data.<sup>6</sup> Suppose, for instance, that an important competitor is about to introduce a superior product in the market. This will probably imply a decrease in the effectiveness of our own marketing effort. Or assume that our advertising agency has developed an outstanding copy, such that our budgets will become more effective. In both cases adjustment of originally estimated parameters may from a managerial point of view be desirable. The need for subjective parameter adaptation is easily explained if historical information is used for estimation. But also if parameterization is based on subjective data, adaptation may be appropriate, e.g. if the ultimate form of the estimated equation is not as expected. In the latter case, instead of changing the parameters, one could also adapt the original data and reestimate the model. Ultimately, the output of module II should be a market share response function, for each (company) product, that forms an acceptable and adequate basis for budget allocation.

- Module III : Allocating the total budget to company products

As indicated in figure 5, the allocation procedure proposed in module III is quite different from previous company practices.<sup>7</sup> Let us describe it in more detail here.

---

insert figure 5 about here

---

From module II, market share response functions for each product (group) enter the allocation module (arrow 5 in figures 1 and 2). The linear market share relationships (equation (3)) provide satisfactory estimation results for each product group. For given levels of competitive communication,  $a_g^c(p)$ , they further imply decreasing returns to scale, such that they appear valuable as a basis for allocating budgets to different product groups. They do, however, pose a problem for those product groups in which the company offers more than one

product: as indicated previously, equation (3) is indifferent to how resources are allocated to products within the same group.

Keeping this in mind, a two-step allocation procedure is proposed. In a first step, resources will be allocated across products within the same group (submodule IIIa) on the basis of more detailed response functions (such as equation (4)). The information obtained from this allocation effort will be used to properly evaluate the communication effectiveness for the product group as a whole. It thus forms a basic input to the second step (submodule IIIb), where allocation across product groups will be handled and simpler linear functions used.

The marketing planning department is essentially responsible for marketing budget allocation in the next year. It is obvious, however, that the short term strategy should be consistent with the company's long term planning. Consequently, it is useful to examine the effect on marketing strategy of a change in planning horizon  $P$ . That explains why the horizon problem will be given some attention later on.

Given current company practices, the allocation procedure proposed here, may not be considered a straightforward one. In what follows, the underlying logic of the two steps and some potential implementation issues are explained in more detail.

\* Module IIIa : Budget allocation within a product group

In submodule IIIa the following basic model structure is used

$$\max \pi_g = \sum_{p=1}^P \sum_{i=1}^{n_g} \pi_g^i(p) (1 + r_g)^{1-p} \quad (5)$$

$$\text{s.t. } \sum_i a_g^i(p) = a_g(p) \quad \text{all } p$$

$$l_g^i(p) \leq a_g^i(p) \leq u_g^i(p) \quad \text{all } i, p$$

In the objective function,  $\pi_g^i(p)$  is defined as:

$$\pi_g^i(p) = m_g^i(p) M_g(p) c_g^i(p) - a_g^i(p) \quad (6)$$

The discount rate,  $r_g$ , may vary across product groups, e.g. to express differences in uncertainty about the ultimate sales level. The constraints will usually be strategic in nature. Management could, for instance, reserve a minimum communication budget for a new product, or impose an upper bound on resources spent on a product considered for withdrawal. Using the model as a basis, the company will be able to compute opportunity costs associated with some upper or lower bound.

As a first illustration of model use, we consider the situation in product group 1, where the company offers two different products. In this group the current situation (time index 0) can be characterized as follows: <sup>8</sup>

$$\begin{array}{lll} c_1(0) M_1(0) = 65 \text{ K} & a_1^c(0) = 3.8 \text{ K} & a_1(0) = .23 \text{ K} \\ a_1^1(0) = .1245 \text{ K} & a_1^2(0) = .1055 \text{ K} & \\ A_1^1(0) = .031 & A_1^2(0) = .026 & \\ m_1^1(0) = .304 & m_1^2(0) = .030 & \end{array}$$

Suppose, for the time being, that the following conditions will hold over the planning period ( $P=5$ ):

$$\begin{array}{lll} c_1(p) M_1(p) = 65 \text{ K} & p = 1, \dots, 5 & \\ a_1^c(p) = 3.8 \text{ K} & p = 1, \dots, 5 & \\ a_1(1) = .23 \text{ K} & a_1(p) = .5 \text{ K} & p = 2, \dots, 5 \\ r_1 = .2 & & \end{array}$$

and that no additional restrictions are imposed. Furthermore, the estimated equation (4) is accepted as a valuable response function for both company products in the group. If the allo-



cation scheme of period 0 will be accepted again in period 1, resulting profit in that period will amount to  $\pi_1(1) = 17.04$  K.

On the other hand, optimal allocation over the next five years - which is obtained through solution of the nonlinear programming model (5), will yield  $\pi_1(1)^* = 17.5$  K, or a 2.7 % profit increase. Since K is large, this 2.7 % increase represents a significant absolute profit gain. The associated optimal allocation of communication budgets is given by

$$a_1^1(1)^* = .2133 \text{ K} \quad \text{and} \quad a_1^2(1)^* = .0177$$

Solving model (5) for alternative levels of  $a_g(p)$ , we can analyse the optimal allocation of these budgets across company products in the group. Figure 6 indicates how, from a long term point of view (horizon  $P=5$ ), the company budget for group 1 in the next period can be optimally divided across products 1 and 2.

---

insert figure 6 about here

---

In a next step, we can study the relationship between  $\pi_g^*(p)$  and  $a_g(p)$ , and between  $\pi_g^*$  and  $a_g(p)$ .

For  $p = 1$  the results are depicted in figures 7 and 8. Figure 7 shows optimal profit (i.e. corresponding to an optimal within group allocation)

---

insert figure 7 about here

---

for group 1 in period 1, as a function of communication expenditures in product group 1. Figure 8 shows optimal profit for group 1, but now over the planning horizon.

---

insert figure 8 about here

These figures are particularly interesting, since they indicate the optimal (short and long term, respectively) profit for group 1 associated with any global budget  $a_1(1)$  available for that group in the first period. Otherwise stated, the relationships implicitly assume optimal allocation of resources  $a_1(1)$  across products in group 1, with reference to a planning period  $P$ . From figure 7, we derive that optimal first period profit  $\pi_1^*(1)$ , reaches a maximum for  $a_1(1) = 1.07 K$ . Figure 8 indicates that from a longer term point of view ( $P=5$ ),  $a_1(1)$  should optimally exceed  $2 K$ .

Given a current level of  $.23 K$ , it is not very likely that the company would suddenly be willing to spend that high an amount !

One must also keep in mind that the foregoing results are associated with the previously specified assumption that all external variables remain constant over the planning period. Judicious model use requires some effort to formulate acceptable estimates for market sales and competitive communication effort in each product group over the planning period. As far as submodule IIIa is concerned, these estimates will have little impact on the optimal budget allocation across products (though, of course,  $\pi_g^*$  is clearly affected !). They will, however, be rather important in submodule IIIb, where communication budgets are assigned to product groups.

\* Module IIIb : Budget allocation across product groups

Allocation of communication resources across product groups is based on the following model:

$$\begin{aligned} \max \pi &= \sum_{p=1}^P \sum_{g=1}^G \pi_g(p) (1 + r_g)^{1-p} \\ \text{s.t. } \sum_g a_g(p) &\leq a(p) \quad \text{all } p \\ 1_g(p) &\leq a_g(p) \leq u_g(p) \quad \text{all } g, p \end{aligned} \quad (7)$$

where, in the objective function, we have

$$\pi_g(p) = m_g(p) M_g(p) c_g(p) - a_g(p) \quad (8)$$

At first sight, model (7) seems almost identical to model (5). In fact, however, a big difference exists. In model (5), an increase in the budget for one product - say  $a_1^1(1)$  - increases its market share -  $m_1^1(1)$  - but negatively affects the market share  $m_1^2(1)$  of the other product the company has in this product category. In model (7), however, market shares (of different product groups !) are mutually independent.

For product groups where  $n_g = 1$ , market share can be estimated using equation (3). Examples are group 2 and group 3, where the following estimation results are obtained: <sup>9</sup>

$$m_2(t) = \alpha_2 + \lambda_2 m_2(t-1) + \beta_2 A_2(t)$$

$$\hat{\alpha}_2 = .0016$$

$$t_{\hat{\alpha}_2} = .42$$

$$\hat{\lambda}_2 = .9295$$

$$t_{\hat{\lambda}_2} = 49.85$$

$$\hat{\beta}_2 = .0757$$

$$t_{\hat{\beta}_2} = 2.24$$

$$R^2 = .9888$$

and

$$m_3(t) = \alpha_3 + \lambda_3 m_3(t-1) + \beta_3 A_3(t)$$

$$\hat{\alpha}_3 = .019$$

$$t_{\hat{\alpha}_3} = 2.38$$

$$\hat{\lambda}_3 = .6732$$

$$t_{\hat{\lambda}_3} = 9.24$$

$$\hat{\beta}_3 = .1034$$

$$t_{\hat{\beta}_3} = 1.73$$

$$R^2 = .7738$$

If  $n_g > 1$ , the company's market share in the group is the total of shares reached by its different products in the group, or :

$$m_g(t) = \sum_{i \in C_g} m_g^i(t)$$

As such, market share  $m_g(t)$  will not only depend on the global communication budget allocated to the group,  $a_g(t)$  - and thus, given  $a_g^c(t)$  on  $A_g(t)$  - but also on how this budget is divided across products in the group. In other words, the effectiveness of communication budgets at the group level - market shares  $m_g(t)$  associated with budgets  $a_g(t)$  - depends on detailed allocation practices within the group. Optimal allocation decisions at the higher company level, which are based on the effectiveness of  $a_g(t)$  budgets, thus require insight into lower level decisions. On the other hand, lower level decisions - budget allocation to products in a group - must take place within the constraints (budget and other restrictions) imposed by higher levels.

Clearly, in order to determine optimal use of communication budgets throughout the company, co-ordinative action between the subsequent decision levels is needed.

In the more general context of hierarchical solution of large scale problems, different co-ordination procedures have been proposed. In essence the following approaches can be distinguished. First, one has the so-called "composition" approaches, which mainly describe possible or existing co-ordination mechanisms in a particular problem context. Next there is a vast literature on "decomposition" approaches which try to derive optimal linkage schemes for varying classes of large scale problems. Two basic types of co-ordination schemes are put forward in the decomposition literature. The first type is the so-called "goal co-ordination" method, in which higher and lower level decisions are linked through the use of appropriate transfer prices that affect lower-level goals. In the second type of approach - the "constraint co-ordination" method - co-ordination is achieved through manipulation of lower level constraints.

The linkage mechanism described here is based on the principles used in the constraint co-ordination method. This co-ordination mechanism implies that for these product groups where  $n_g > 1$ ,  $m_g(p)$  in equation (8) is obtained as an output of module IIIa. In that module model (5) is solved for alternative levels of  $a_g(1)$ , and associated optimal levels of  $m_g(1)$  are computed. Since market share also strongly depends on lagged share, model solutions are obtained for different levels of  $m_g^i(0)$ ,  $i \in C_g$ , which can in turn be associated with different levels of  $m_g(0)$ ;  $m_g(0) = \sum_{i \in C_g} m_g^i(0)$ . This repeated solution of model (5) thus generates data points on the basis of which a market share response function (similar to equation (3)) can be estimated for the product group as a whole.

Let us illustrate this procedure for group 1, where two products are offered. For this group model (5) is first solved for alternative levels of  $a_1(1)$ , leading to the results in figure 9. Note that these results also form the basis for figures 7 and 8.

---

insert figure 9 about here

---

Secondly, different levels of  $m_1(0)$  are considered for model solution, yielding the optimal results in figure 10.

---

insert figure 10 about here

---

The outcomes obtained are now used as data points for estimation of a market share response function for group 1:

$$m_1(t) = \alpha_1 + \lambda_1 m_1(t-1) + \beta_1 A_1(t) \quad (9)$$

$$\hat{\alpha}_1 = -.0042$$

$$t_{\hat{\alpha}_1} = -.35$$

$$\hat{\lambda}_1 = .8056$$

$$t_{\hat{\lambda}_1} = 23.73$$

$$\hat{\beta}_1 = .1994$$

$$t_{\hat{\beta}_1} = 11.68$$

$$R^2 = .9729$$

Hereafter we will refer to the above procedure as the "indirect" estimation.

The indirect procedure might appear to the reader to be unduly complicated. To illustrate its potential usefulness, let us contrast it with the more straightforward "direct" estimation practice. In estimating equation (3) we have in fact applied this direct procedure. Just to distinguish the two sets of coefficients we give the latter ones a superscript D. We thus have:

$$\begin{array}{ll} \hat{\alpha}_1^D = .0089 & t_{\hat{\alpha}_1} = 1.28 \\ \hat{\lambda}_1^D = .8506 & t_{\hat{\lambda}_1} = 32.81 \\ \hat{\beta}_1^D = .0926 & t_{\hat{\beta}_1} = 1.44 \end{array}$$

Both the direct and indirect estimates have a constant term that does not significantly differ from zero. The coefficient of lagged market share is highly significant and takes on similar values in both cases. A striking difference in estimation results is that  $\hat{\beta}_1^D$  is almost half of  $\hat{\beta}_1$  or, the communication effectiveness in group 1 reported by the direct estimation procedure is less than half as large as that given by the indirect method. <sup>11</sup>

Whether one should use the direct or indirect estimates as an input to model (5) is therefore not a "theoretical" or "cosmetic" question, but might well bear on the reported optimal allocation across product groups, of a given company budget. In any case, the objective function of (5) will be affected by this choice.

To explain why we favor the indirectly estimated response function, we must examine in what respect it differs from direct estimation. As explained previously, indirect estimation presupposes optimal budget allocation within the group, and thus indicates the full share potential of the group's communication resources  $a_g(t)$ , with respect to the planning period.

The response function obtained through "direct" estimation, on the contrary, implicitly reflects past company practices in allocating the communication budget  $a_g(t)$  across products in the group. As is illustrated for group 1, the distinction may be important, since past allocations can significantly differ from optimal ones. For the case at hand, direct estimation seems to seriously underestimate the potential effectiveness of group 1's communication budget.

But there is more. Even if within-group budget allocation would have been decided upon optimally in the past, direct estimation of the response function would yield potential communication effectiveness under past conditions. Since environmental conditions and constraints in the planning period may substantially differ from historical ones, the potential impact of  $a_g(t)$  may again be misjudged through direct assessment. Indirect estimation, based on sensitivity analysis, allows one to anticipate future evolutions and their impact on communication effectiveness.

In short, the indirect estimation method is preferred to the direct one, because it allows for more accurate assessment of the attainable communication effectiveness in subsequent groups (where  $n_g > 1$ ), thus leading to a better allocation of resources across groups in the planning period.

The market share functions constitute only one important input of model (8). The optimal allocation across product groups may also be affected by the evolution of market sales and competitive expenditures in the groups. For the time being, future levels of these variables are predicted on the basis of simple extrapolation techniques, eventually supplemented by subjective judgment.

Market sales evolutions in groups 1, 2 and 3 are approximated by some simple time series models, using the limited historical information available. The following evolutions are seen as reasonable by management: <sup>12</sup>

$$c_1(t+1) M_1(t+1) = 7.06 (c_1(t) M_1(t))^{.541} \quad R^2 = .92$$

(4.49)                      (4.80)                       $R^2 = .88$   
a

$$c_2(t+1) M_2(t+1) = 3.43 (c_2(t) M_2(t))^{.692} \quad R^2 = .78$$

(1.247)                      (2.654)                       $R^2 = .67$   
a

$$c_3(t+1) M_3(t+1) = c_3(t) M_3(t)$$

The historical data on market sales and predictions based on the time series are graphically represented in figures 11, 12 and 13.

---

insert figures 11, 12 and 13 about here

---

As far as competitive budgets for the groups are concerned, no major shifts are expected. We thus have:

$$a_1^c(p) = 3.8 \text{ K}$$

$$a_2^c(p) = 2.7 \text{ K}$$

$$a_3^c(p) = 2.8 \text{ K} \quad \text{for } p = 0, \dots, 3$$

13

Finally, given

$$m_1(0) = .335 \quad r_g = .2 \quad \text{all } g$$

$$m_2(0) = .076$$

$$m_3(0) = .092$$

model (7) can be used to allocate given budgets  $a(p)$ ,  $p = 1, \dots, 3$  optimally across product groups. The resources thus allocated to group 1, for which  $n_g = n_1 > 1$ , can then be considered as final budget restrictions for solving model (5).

Given the simple form of the response functions, and assuming that future conditions remain unchanged, one could also easily



calculate the optimum (equilibrium) allocation of a periodic budget  $a(p)$  across product groups, over an infinite horizon. Figure 14 provides a graphical representation of this optimal allocation across groups 1, 2 and 3, for different levels of  $a(p)$ .

---

insert figure 14 about here

---

The potential benefits of model (7) do, however, extend beyond the optimal allocation of given budgets  $a(p)$ , with given constraints  $l_g(p)$  and  $u_g(p)$ . Indeed, sensitivity analysis based on the model may provide valuable information for managers responsible for imposing those constraints.

For instance, letting  $a(2) = a(3) = 2K$ , figure 15 depicts optimal profit in period one,  $\pi^*(1)$ , as a function of  $a(1)$ .

---

insert figure 15 about here

---

Unless  $a(1)$  exceeds  $7K$ , the optimal allocation implies that product group 2 will receive no resources at all.

Table 1 indicates how first period-profit is affected by imposing a lower bound on group 2's budget.

---

insert table 1 about here

---

As in module IIIa, it can also be interesting - from a more strategic point of view - to examine the impact of changes in  $a(1)$  and  $l_g(1)$  on  $\pi^*$ , and thus assess the long term impact of resource changes, as well as the long term opportunity cost of the constraints  $l_g(1)$  (or  $u_g(1)$ ).

Alternatively, one may want to examine the optimal allocation and associated profit for different scenarios with respect to competitive spending or overall market sales in different groups.

Ultimately, as for model (6), the results of repeated solution of model (8) could be used to estimate a response function which implicitly reflects optimal allocation.

Considering only groups 1, 2 and 3, and accepting the market sales evolutions given in figures 11, 12 and 13, the following optimal profit function can be estimated:

$$\pi^*(1) = S^*(1) - a(1)$$

where 
$$S^*(1) = \alpha a(1)^\beta S(0)^\gamma a^c(1)^\delta$$

with

$$\hat{\alpha} = 3.6263 \qquad t_{\hat{\alpha}} = 1.47$$

$$\hat{\beta} = .107 \qquad t_{\hat{\beta}} = 10.3$$

$$\hat{\gamma} = -.086 \qquad t_{\hat{\gamma}} = -.24$$

$$\hat{\delta} = .6517 \qquad t_{\hat{\delta}} = 8.55$$

$$R^2 = .88$$

$$R_a^2 = .866$$

This estimated relationship indicates the highest profit one can expect from a given budget  $a(1)$ , for a given planning period  $P$ , and with pre-specified constraints  $u_g(p)$  and  $l_g(p)$ . It could eventually assist higher level management in allocating communication resources over time, or across national departments of the company, and thus link the problem of allocating budgets across groups, to still higher level decisions.

The results provided above are only meant to be illustrative of potential model benefits. In practical situations, some model inputs have to be more carefully considered than was done here. This is for instance the case for the "planning horizon", which was set at 3 or 5 periods in our analysis. Before final decisions are made, sufficient attention must be paid to the choice of the planning horizon, since the latter may affect model outcomes. If the planning period is too short, important future evolutions are not taken into

account, which results in the so-called "horizon bias". In our higher level model, for instance, a change in P may affect the allocation across segments in each period.<sup>14</sup> Final decisions on budget use in the next period require some sensitivity analysis on the effect of P. In our example, despite the importance of carryover effects, the impact of the planning horizon remains fairly limited, as indicated in table 2.

---

insert table 2 about here

---

The problem of "horizon bias" becomes more important if - instead of working with periodic budget constraints - a total budget a has to be allocated not only across segments, but over time. In such a problem context, there is a tendency to allocate more to early periods as the model's planning horizon decreases, since the long term profitability of budgets used at the end of the planning horizon is not included in the objective function. If the company's objective is to maximize long run profit, it is clear that truncation of the objective function in the model after a limited number of periods leads to suboptimal results.<sup>15</sup> Appropriate measures must then be taken to reduce the horizon bias. Several procedures are possible, such as:

- i. prolonging the planning horizon
- ii. introducing a post-planning horizon<sup>16</sup>, during which some equilibrium performance must be maintained
- iii. introducing terminal constraints on performance or budgets.

An elaborate treatment of these issues would lead us too far. For our particular problem situation, some pros and cons of the different approaches are provided in Gijbrecchts (1984).

## CONCLUSION

In this paper we indicated how a decision support system could be developed for hierarchically allocating scarce communication resources to product groups, and further to products within a group.

We suggested how these subsequent allocation decisions could be mutually linked and integrated in a more strategic decision framework. The linkage scheme proposed for co-ordinating the decisions made at different company levels is consistent with the basic principles of general large scale solution methods, but at the same time flexible and tractable.

Of course, the analysis presented here is far from complete. In practice, alternative environmental scenarios may be explicitly compared. Also, we must keep in mind that the market share response functions are estimated and their parameters uncertain. The sensitivity of the marketing plan to parameter changes is thus worth considering.

## APPENDIX : GLOSSARY OF SYMBOLS

$a(t)$	= total communication budget for the company (in year $t$ )
$a_g(t)$	= communication expenditures of the company in product group $g$
$a_{g,tot}(t)$	= communication expenditures in product group $g$ (company and competitors)
$a_g^i(t)$	= communication expenditures for product $i$ in group $g$
$a_g^c(t)$	= communication expenditures of competitors in group $g$
$a^c(t)$	= communication expenditures of competitors in all groups
$A_g^i(t)$	= $a_g^i(t)/a_{g,tot}(t)$ = communication share of brand $i$ in group $g$
$A_g(t)$	= $a_g(t)/a_{g,tot}(t)$ = communication share of the company in group $g$
$c_g^i(t)$	= unit profit contribution for product $i$ in group $g$
$C_g$	= set of superscripts in group $g$ denoting company products
$\epsilon_t^i$	= stochastic disturbance term
$G$	= number of product groups
$m_g^i(t)$	= market share (product $i$ in group $g$ , year $t$ )
$m_g^{ei}$	= long term (equilibrium) market share for product $i$ in group $g$
$m_g(t)$	= market share when the company has only one product in group $g$
$M_g(t)$	= total market sales (in units) in group $g$
$n_g$	= number of products in group $g$ (in the estimation module) = number of products of the company group $g$ (in the allocation module)

$p$	= year $p$ in the planning period
$P$	= planning horizon
$\pi_g^i(t)$	= profit in year $t$ (product $i$ , group $g$ )
$\pi_g(t)$	= profit in year $t$ in product group $g$
$\pi_g$	= profit in group $g$ over the planning horizon
$\pi(t)$	= total profit for the company in year $t$
$\pi$	= total profit for the company over the planning horizon
$r_g$	= discount factor for product $g$
$t_i^!$	= number of years since introduction of product $i$ (= $t - t_{\text{intro},i}$ )
$t_{\text{intro},i}$	= year of introduction of product $i$
$S(t)$	= sales revenue for the company in year $t$

## FOOTNOTES

- 1 A few examples are Larréché and Srinivasan (1981, 1982), Lodish (1982) and Gijbrecchts and Naert (1982,1984).
- 2 For the detailed definition of the various symbols, see the glossary in the Appendix.
- 3  $R^2$  is defined as  $R^2 = (1 - \Sigma_{i,t} (\hat{\epsilon}_t^i)^2 / \Sigma_{i,t} (m_g^i(t) - \bar{m}_g)^2)$  with  $\hat{\epsilon}_t^i = m_g^i(t) - \hat{m}_g^i(t)$ ,  $\bar{m}_g = \Sigma_{i,g} m_g^i(t) / n_g \cdot T$  and  $\hat{m}_g^i(t)$  the estimated value of market share. Since equation (2) does not contain a constant term, it would be appropriate to define explanatory power as  $R^2 = (1 - \Sigma_{i,t} (\hat{\epsilon}_i^t)^2 / \Sigma_{i,t} (m_g^i(t))^2)$ .
- 4 On the problem of the capacity of people to provide reliable judgmental estimates see, for example, Chakravarti, Mitchell and Staelin (1981), and Little and Lodish (1981).
- 5 This is not as undesirable a characteristic as it may seem, since keeping  $a_{g,tot}(t)$  constant implies that giving increased communication support to one product is compensated by decreased support for other products. It is unlikely that such will systematically be the case.
- 6 For a more detailed discussion about combining observed and subjective data, see, for example, Naert and Weverbergh (1981).
- 7 As pointed out earlier, module IV has not been developed yet. That explains why we do not find a feedback from module IV to module III in figure 4.
- 8 Both products have the same profit margin.
- 9 The superscript  $i$  in equation (3) can be omitted in the allocation model, since the company offers only one product in groups 2 and 3.
- 10 For a more detailed discussion of the different approaches with particular attention to implementation aspects, see Gijbrecchts (1984,1985).

- 11 We should of course be aware that on the basis of  
 $\hat{\beta}_1 = .1994$  we can reject the hypothesis that, for  
example,  $\beta_1 = .0926$ , but the direct estimate  $\hat{\beta}_1^D =$   
.0926 does not significantly differ from  $\beta_1 = .1994$
- 12 The figures in brackets are t-statistics.
- 13 We now take  $P = 3$  to illustrate that the optimal bud-  
get corresponding to maximum profit in period one de-  
viates significantly from that leading to maximum pro-  
fit over the planning horizon, even if that horizon is  
short.
- 14 Similar remarks are valid for the lower level model as  
well.
- 15 At least, if any dynamic effects exist.
- 16 This is the approach taken by Larréché and Srinivasan  
in STRATPORT.



## REFERENCES

- D. CHAKRAVARTI, A. MITCHELL and R. STAELIN (1981), "Judgement Based Marketing Decision Models: Problems and Probable Solutions", Journal of Marketing, vol. 45, Fall, pp. 13-23.
- E. GIJSBRECHTS (1984), Multiproduct Marketing Allocation Models: An Implementable Hierarchical Approach, doctoral dissertation, UFSIA, University of Antwerp.
- E. GIJSBRECHTS (1985), "Implementability of Hierarchical Approaches to Large Scale Organizational Problems", Large Scale Systems (forthcoming).
- E. GIJSBRECHTS and Ph. NAERT (1982), "A Multiproduct Marketing Resource Allocation Model", Proceedings 9th International Research Seminar in Marketing, Aix-en-Provence, pp. 494-519.
- E. GIJSBRECHTS and Ph. NAERT (1984), "Towards Hierarchical Linking of Marketing Resource Allocation to Market Areas and Product Groups", International Journal of Research in Marketing, vol. 1, n° 2, pp. 97-116.
- J.C. LARRECHE and V. SRINIVASAN (1981), "STRATPORT: A Decision Support System for Strategic Planning", Journal of Marketing, vol. 45, Fall, pp. 39-52.
- J.C. LARRECHE and V. SRINIVASAN (1982), "STRATPORT: A Model for the Evaluation and Formulation of Business Portfolio Strategies", Management Science, vol. 28, September, pp. 979-1001.
- J.D.C. LITTLE and L.M. LODISH (1981), "Commentary on Judgement Based Marketing Decision Models", Journal of Marketing, vol. 45, Fall, pp. 24-9.
- L.M. LODISH (1982), "A Marketing Decision Support System for Retailers", Marketing Science, vol. 1, n° 1, Winter, pp. 31 - 56.

Ph. NAERT, E. GIJSBRECHTS and M. WEVERBERGH (1983), "Een beslissingsondersteuningssysteem voor het alloceren van marketing-middelen in een multiproduktonderneming", Bedrijfskunde, vol. 55, n° 4, pp. 335-44.

Ph. NAERT and M. WEVERBERGH (1981), "Subjective Versus Empirical Decision Models", in R. SCHULTZ and A. ZOLTNERS (eds.), Marketing Decision Models, New York, North-Holland/Elsevier, pp. 99-123.

Table 1 : sensitivity of  $m_2(1)$  and  $\pi^*(1)$  to changes in  $l_2(1)$

<u><math>l_2(1)</math></u>	<u><math>m_2(1)</math></u>	<u><math>\pi^*(1)</math></u>
0 K	.0809	25.17 K
.05 K	.0828	25.15 K
.1 K	.0846	25.12 K
.2 K	.0881	25.05 K
.3 K	.0913	24.98 K

Table 2 : influence of planning horizon on budget allocated to product groups

<u>P</u>	<u><math>a(1)</math></u>	<u><math>a_3(1)</math></u>	<u><math>a_2(1)</math></u>	<u><math>a_1(1)</math></u>
3	2	0	.0946	1.9054
5	2	0	.1649	1.8351
$\infty$	2	0	.3256	1.6744
---	---	---	---	---
3	3	0	.4312	2.5688
5	3	0	.5094	2.4906
$\infty$	3	0	.6890	2.3110

Figure 1 : elements of the improved planning system

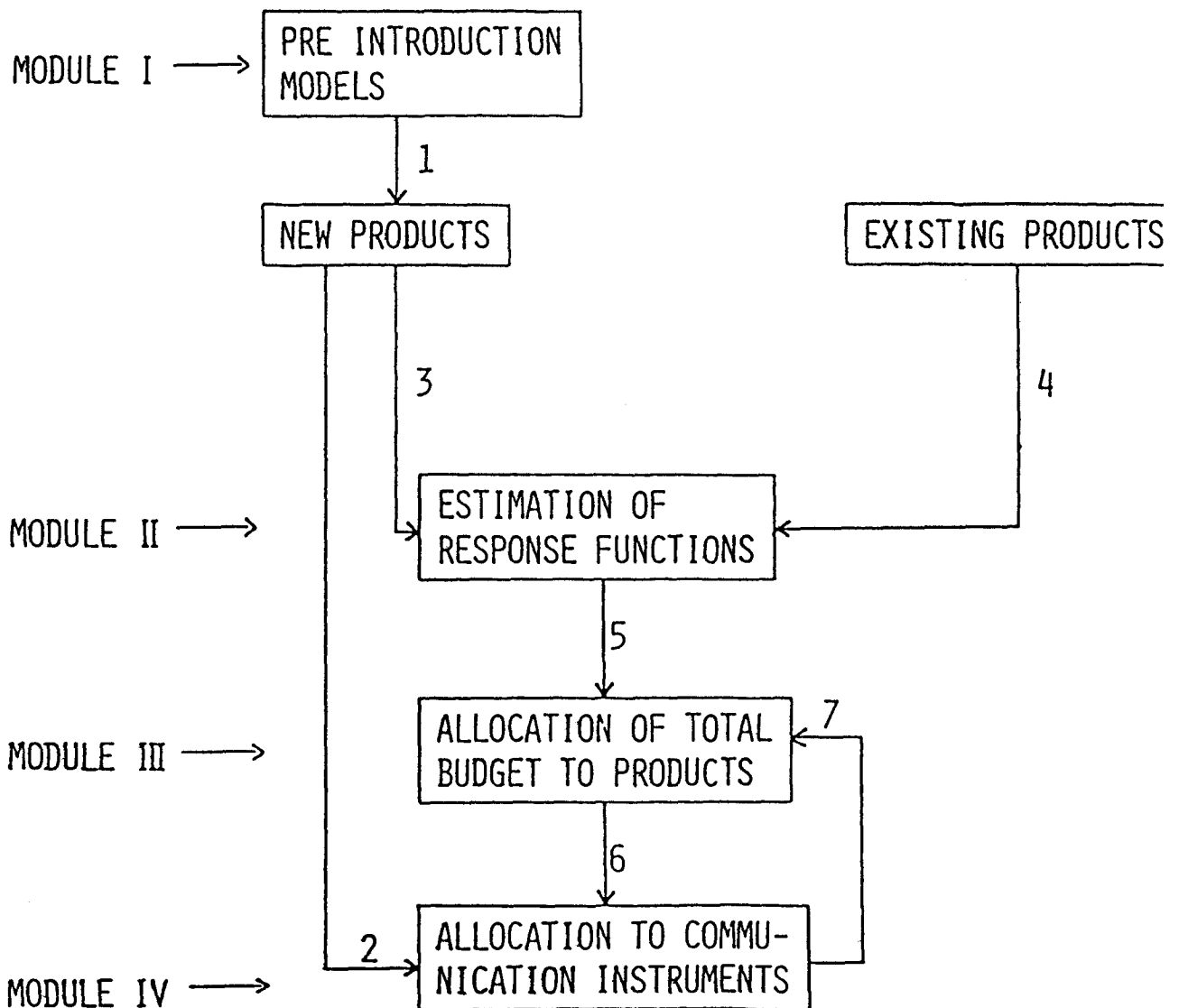


Figure 2 : submodule II : estimation of market share functions

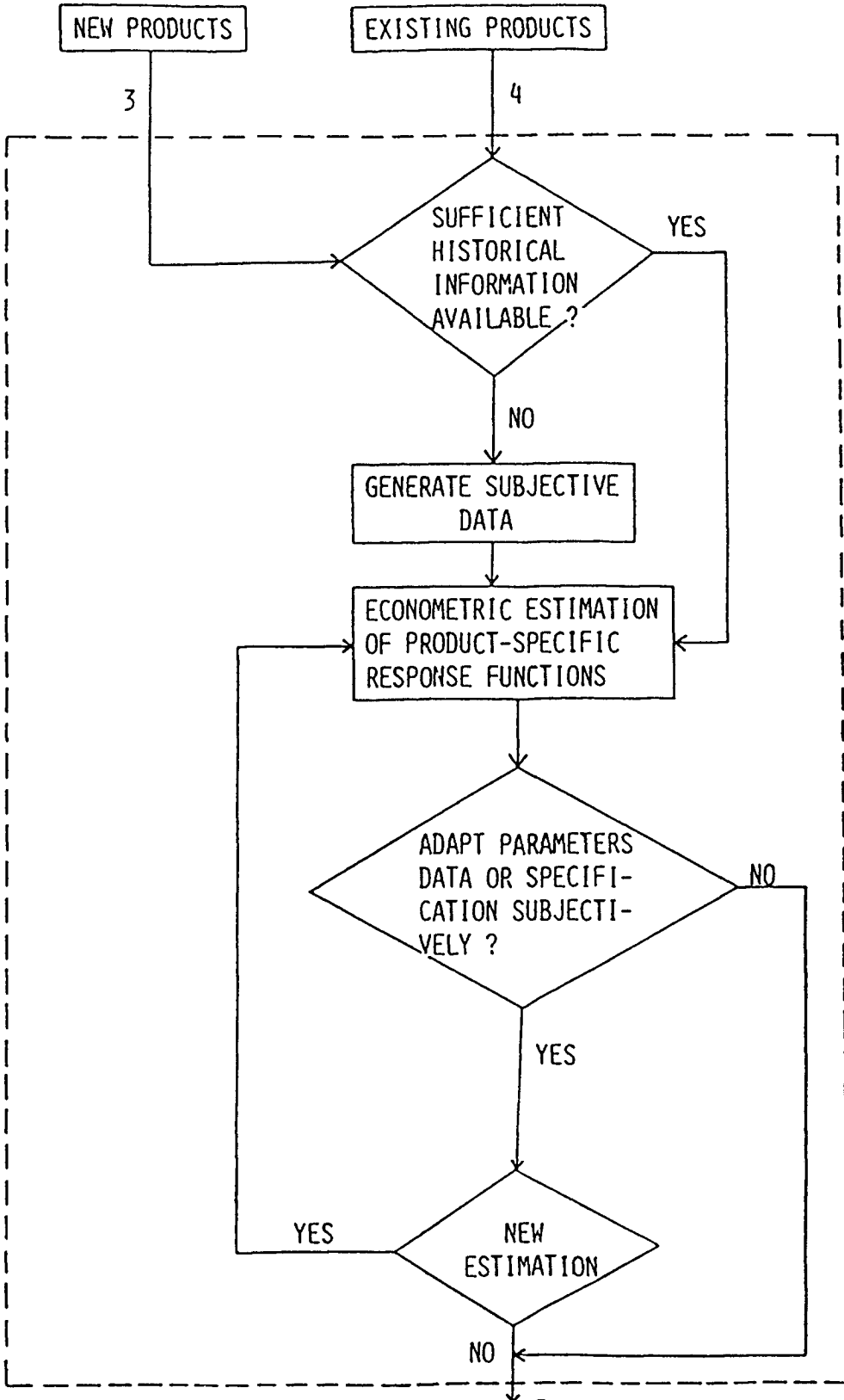


Figure 3 : difference between real and estimated market share

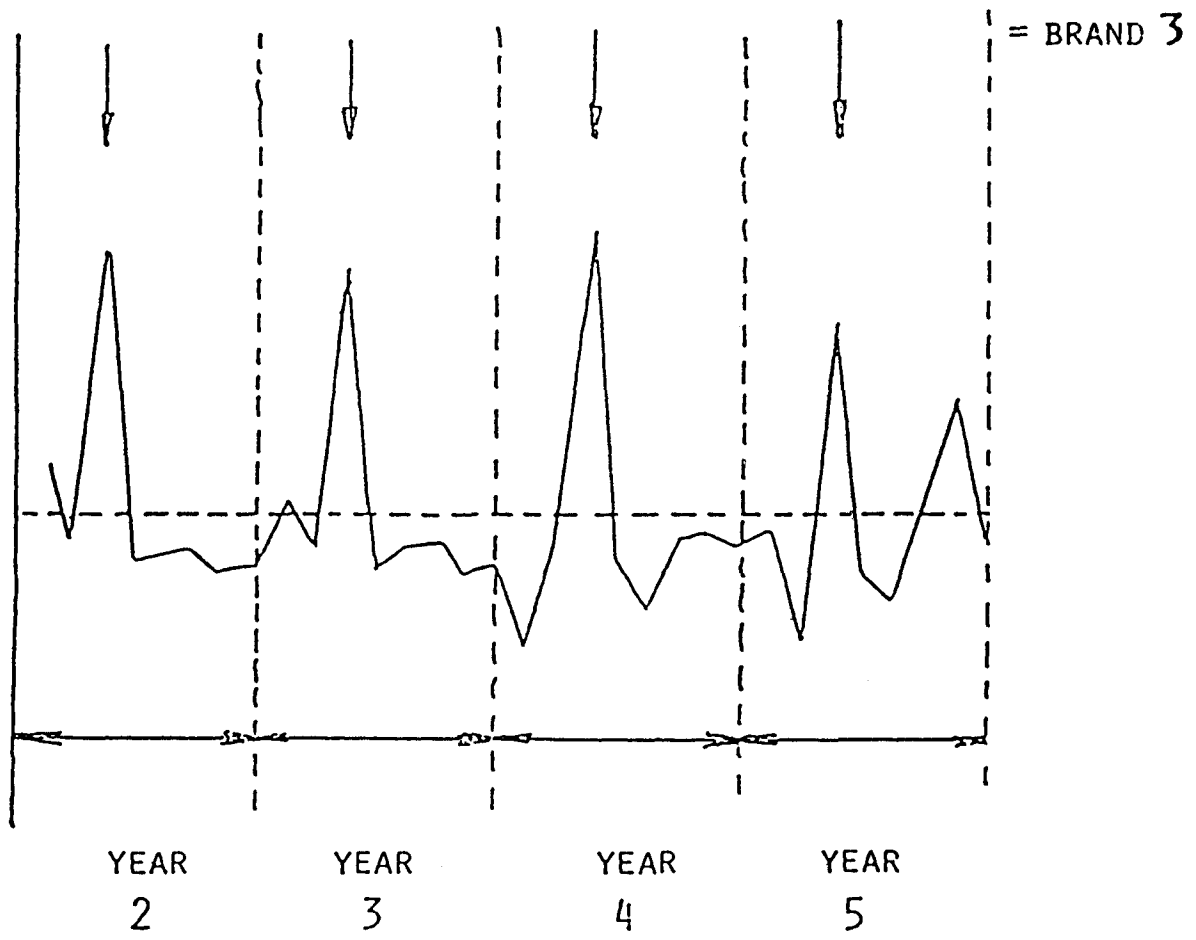


Figure 4a :  
 short and long term  
 market share for  
 product 1  
 group 1

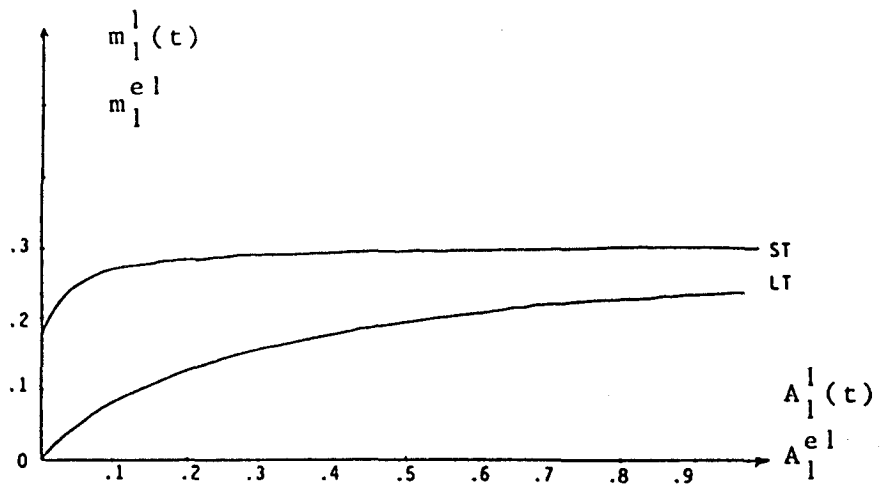


Figure 4b :  
 short and long term  
 market share for  
 product 2  
 group 1

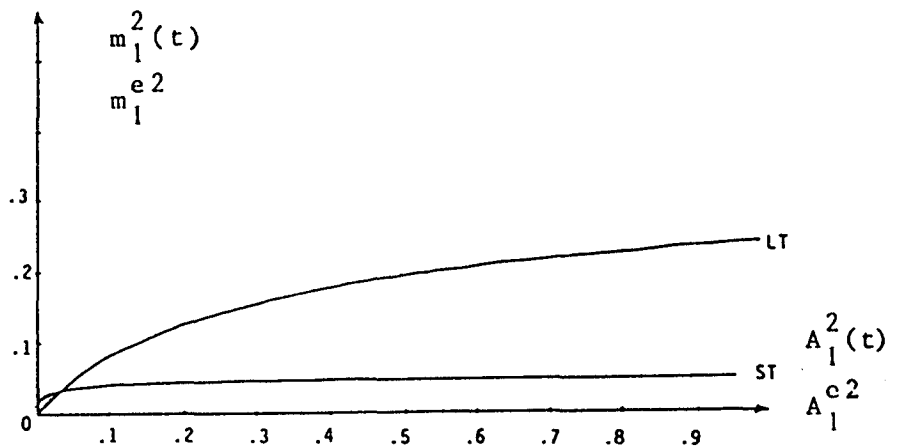


Figure 4c :  
 short and long term  
 market share for  
 product 3  
 group 1

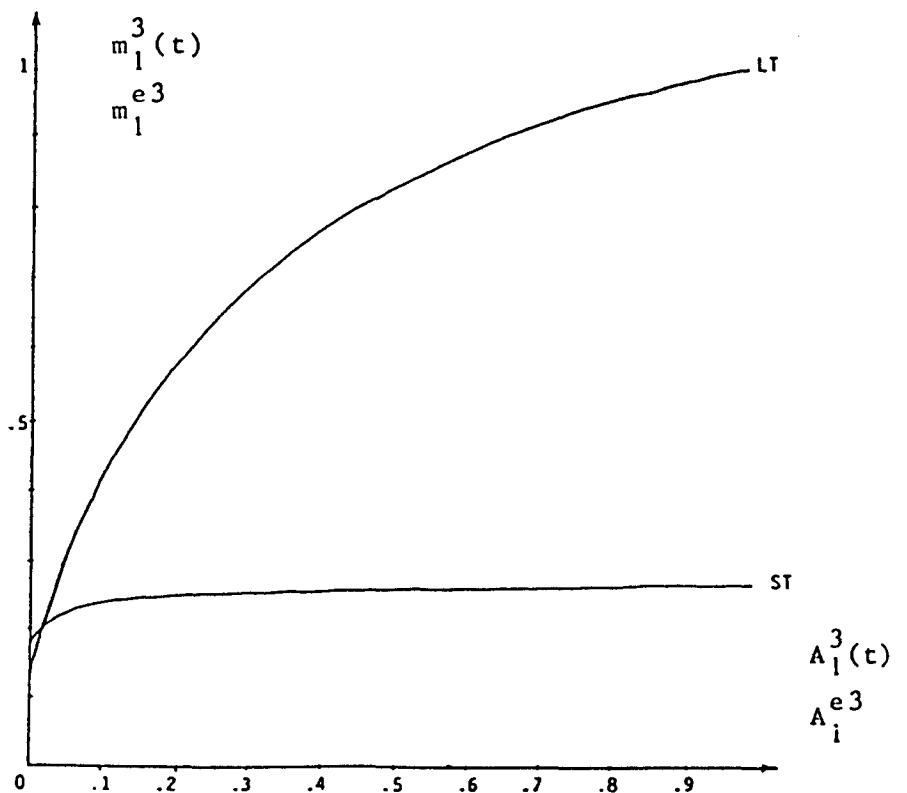


Figure 5 : the allocation module (module III)

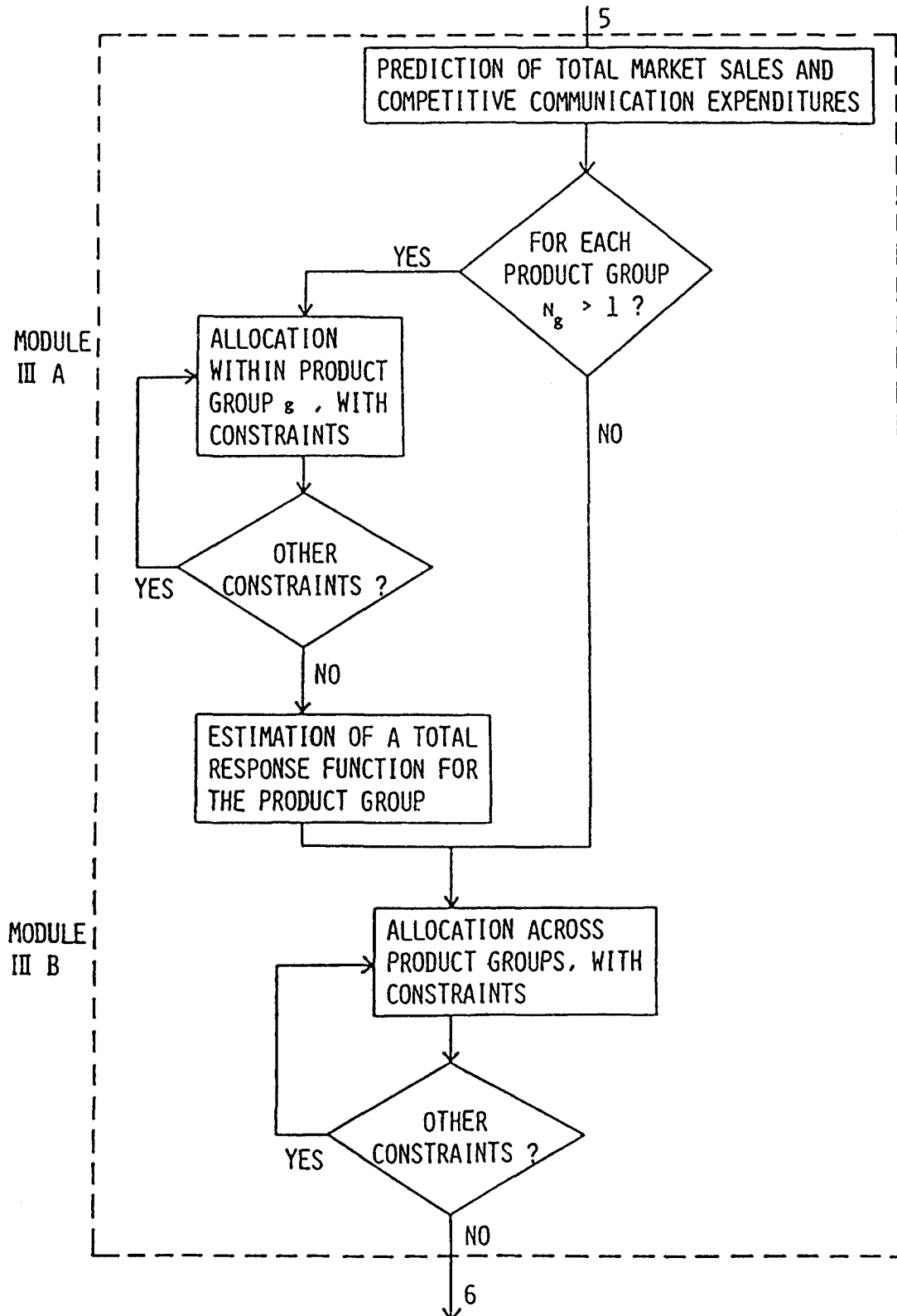




Figure 6 : share in product group 1 budget for products 1 and 2 as a function of product group budget in period 1

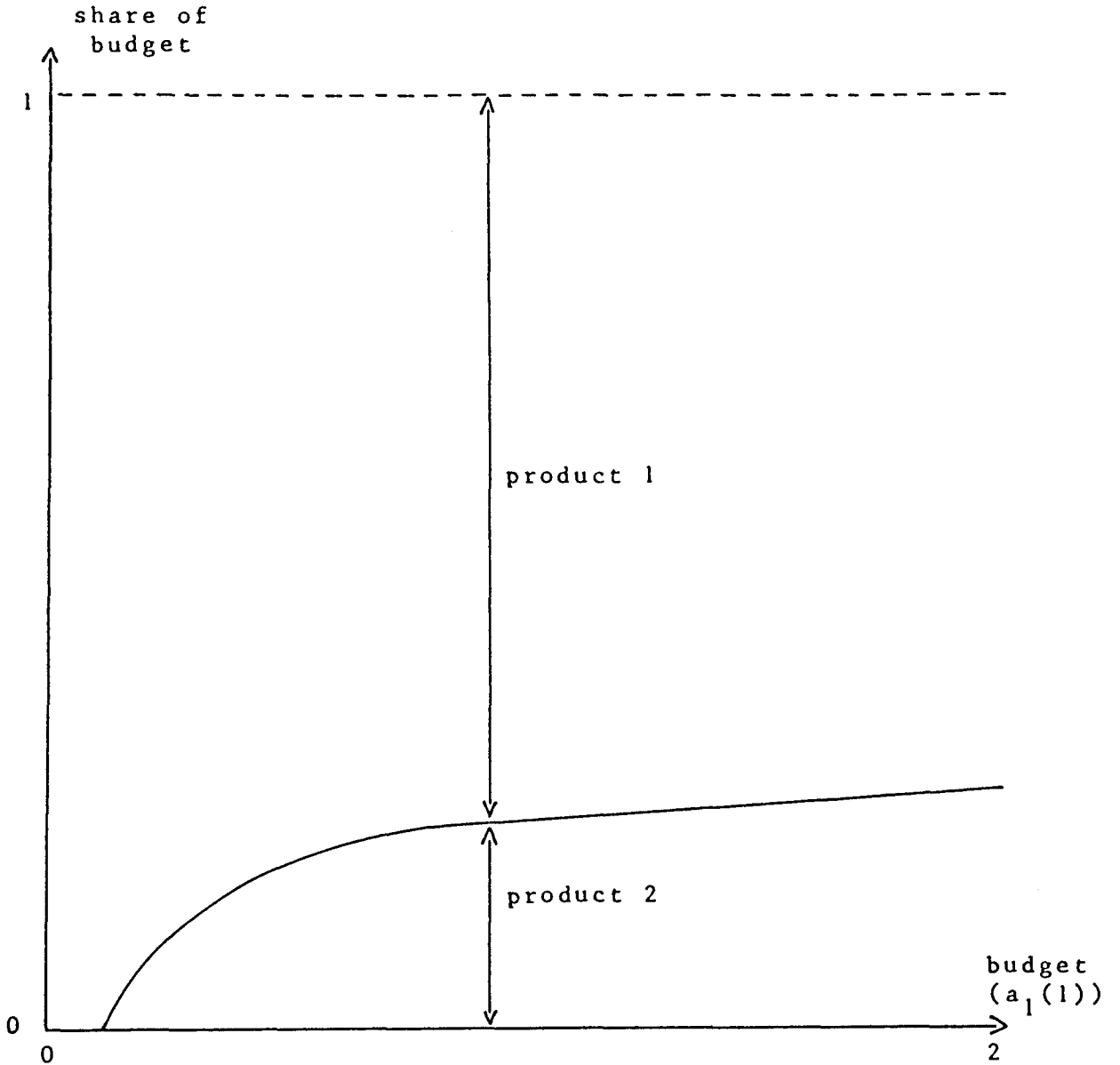


Figure 7 : optimal first-period profit as a function of communication budget in period one (group 1)

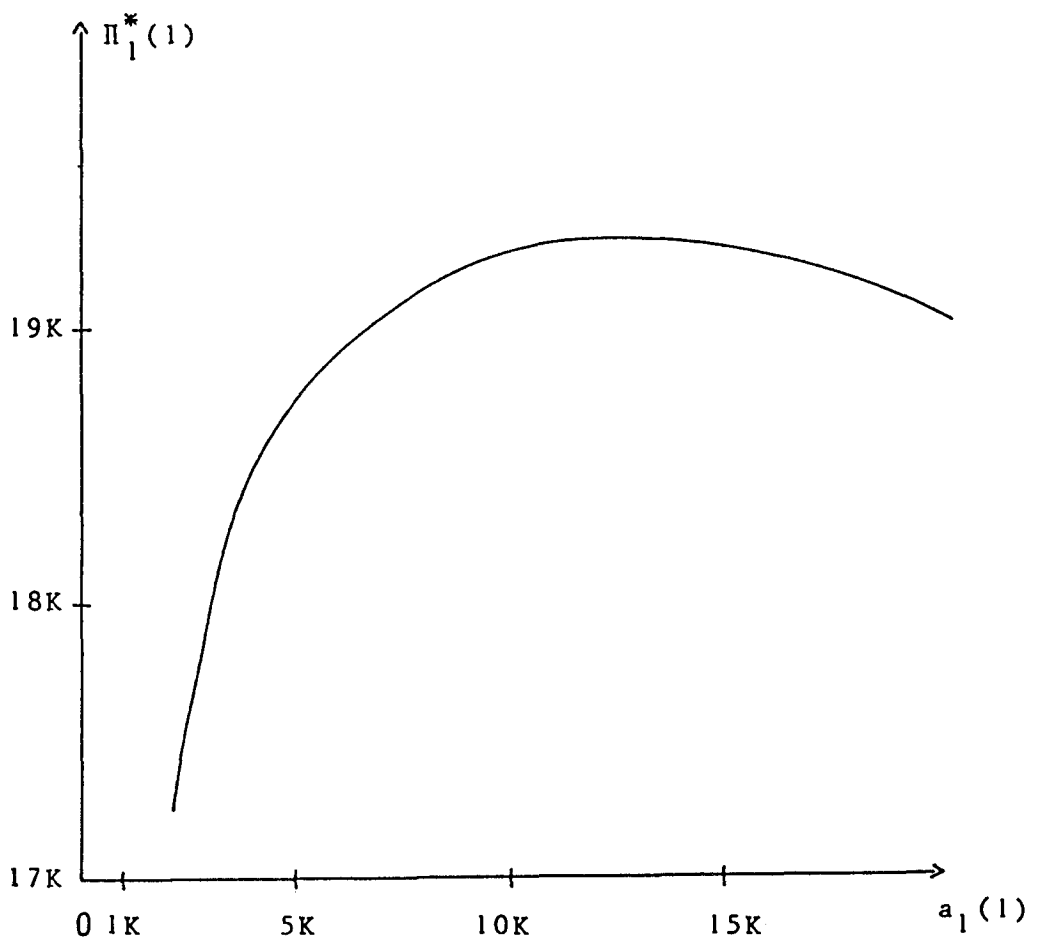


Figure 8 : optimal profit over the planning horizon as a function of communication budget in period one (group 1)

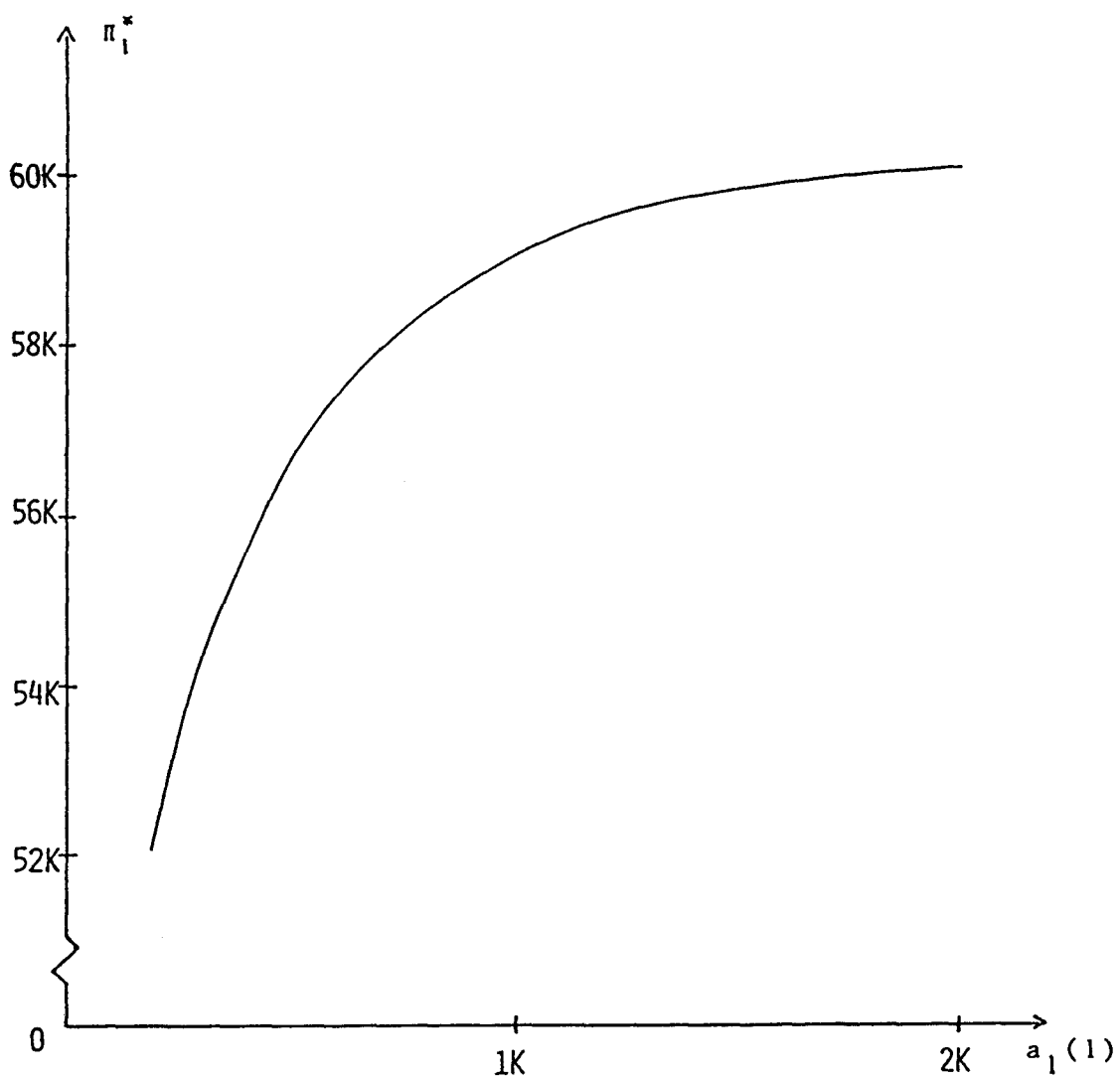


Figure 9 : optimal market share in period 1 as a function of communication budget in period 1 (group 1)

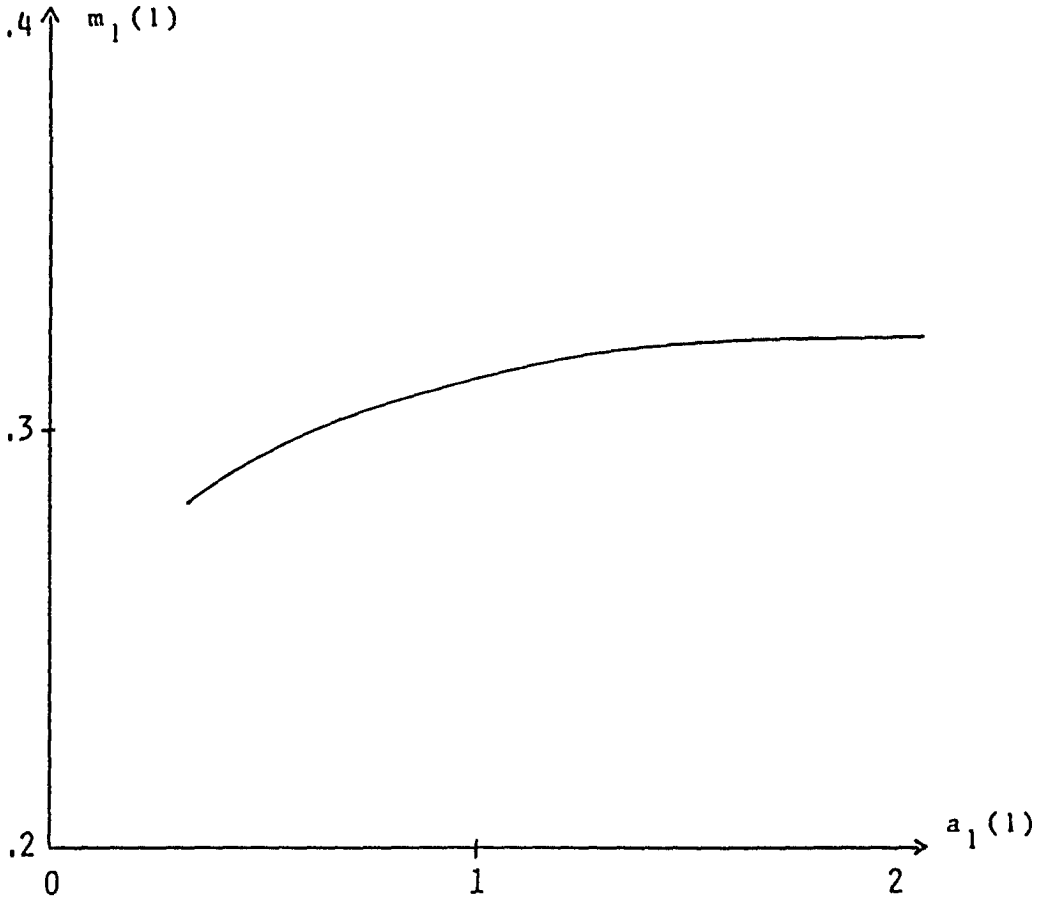


Figure 10 : optimal market share in period 1 associated with alternative levels of lagged market share (group 1)

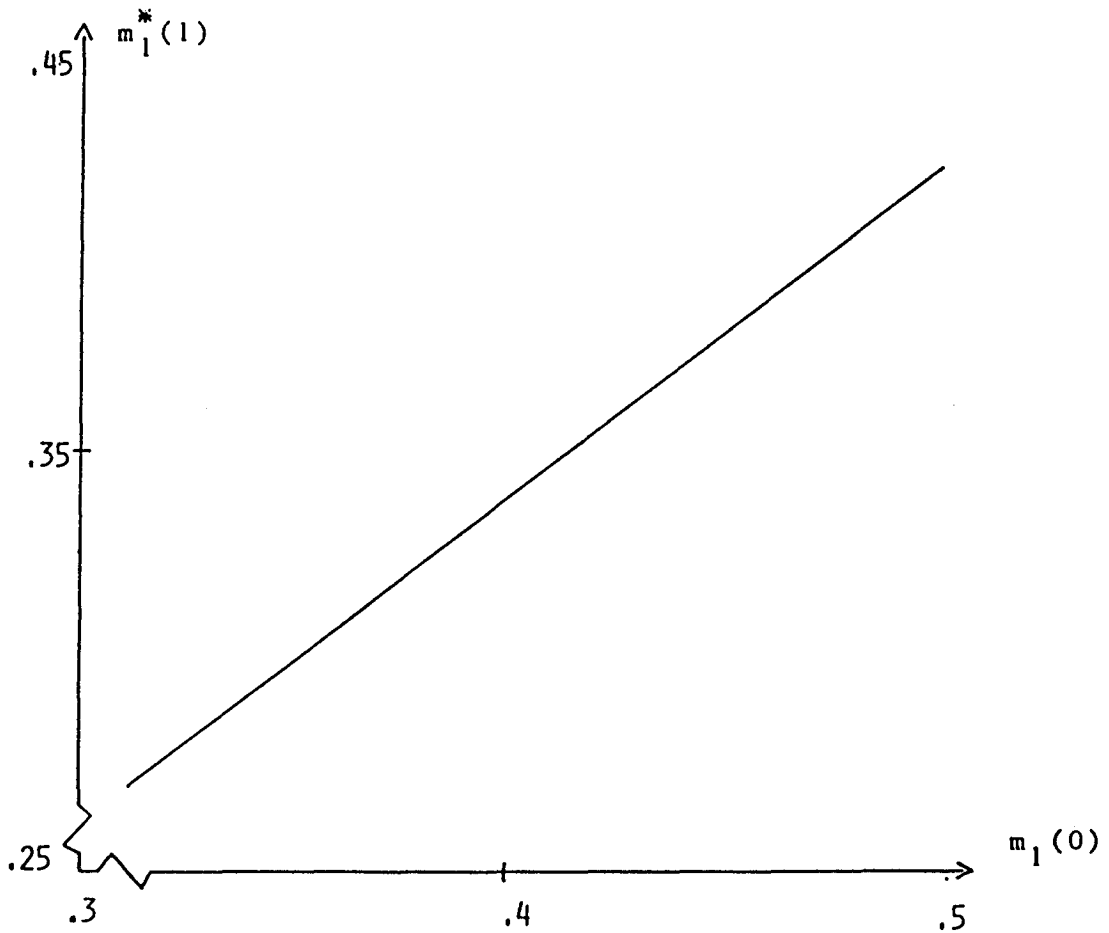


Figure 11 : actual (—) and predicted (---) market sales  
(group 1)

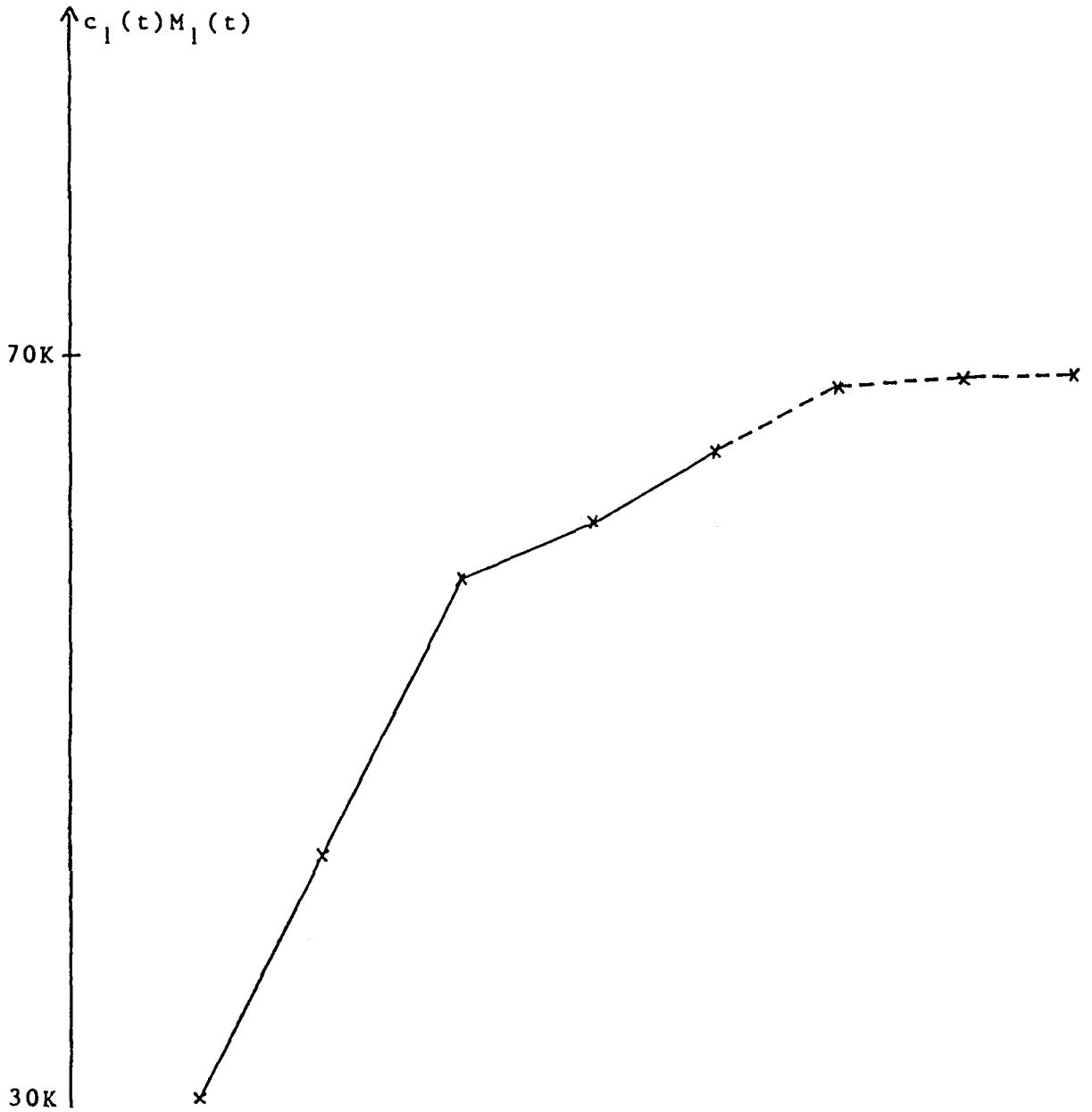


Figure 12 : actual (—) and predicted (---) market sales  
(group 2)

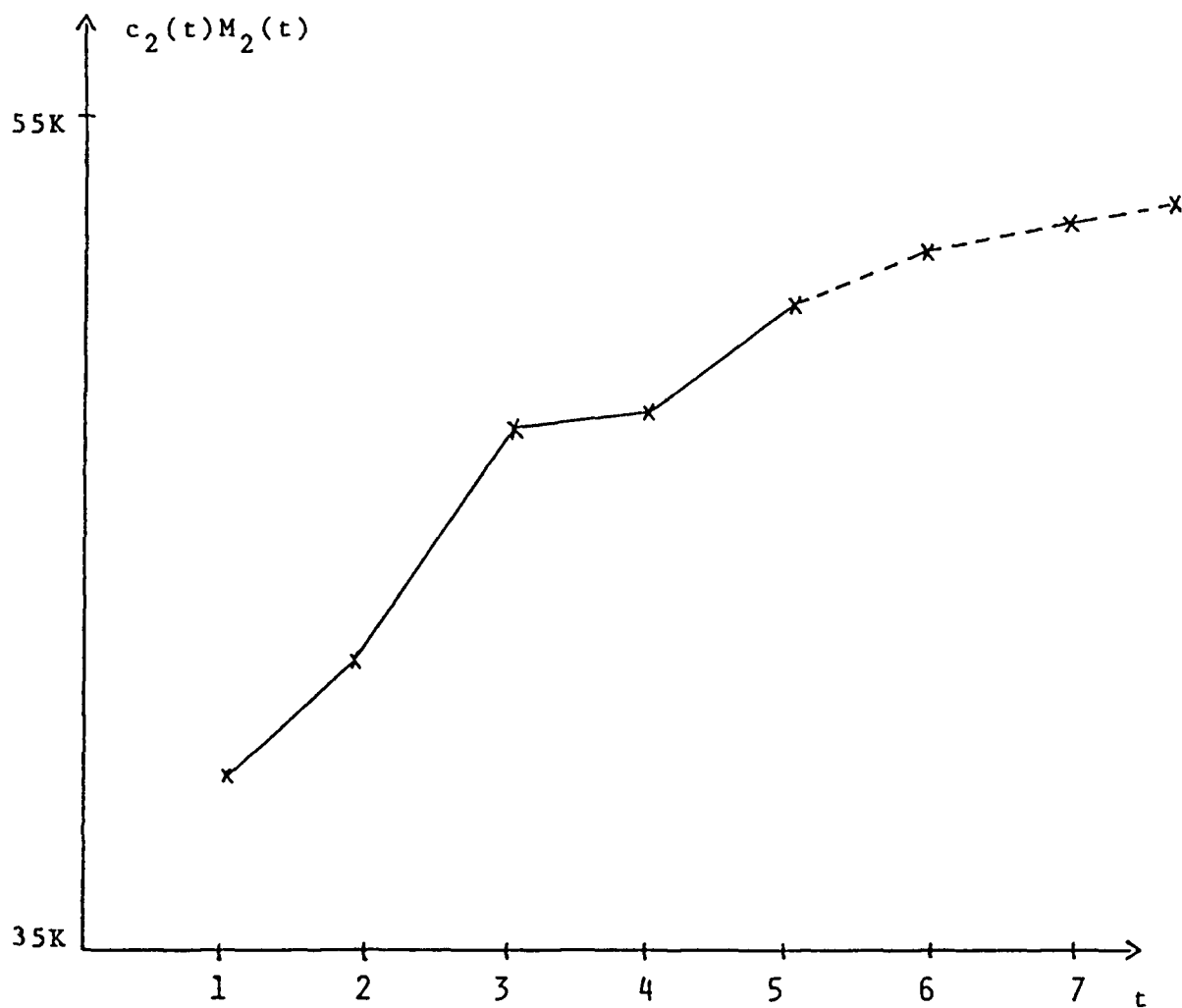


Figure 13 : actual (—) and predicted (---) market sales  
(group 3)

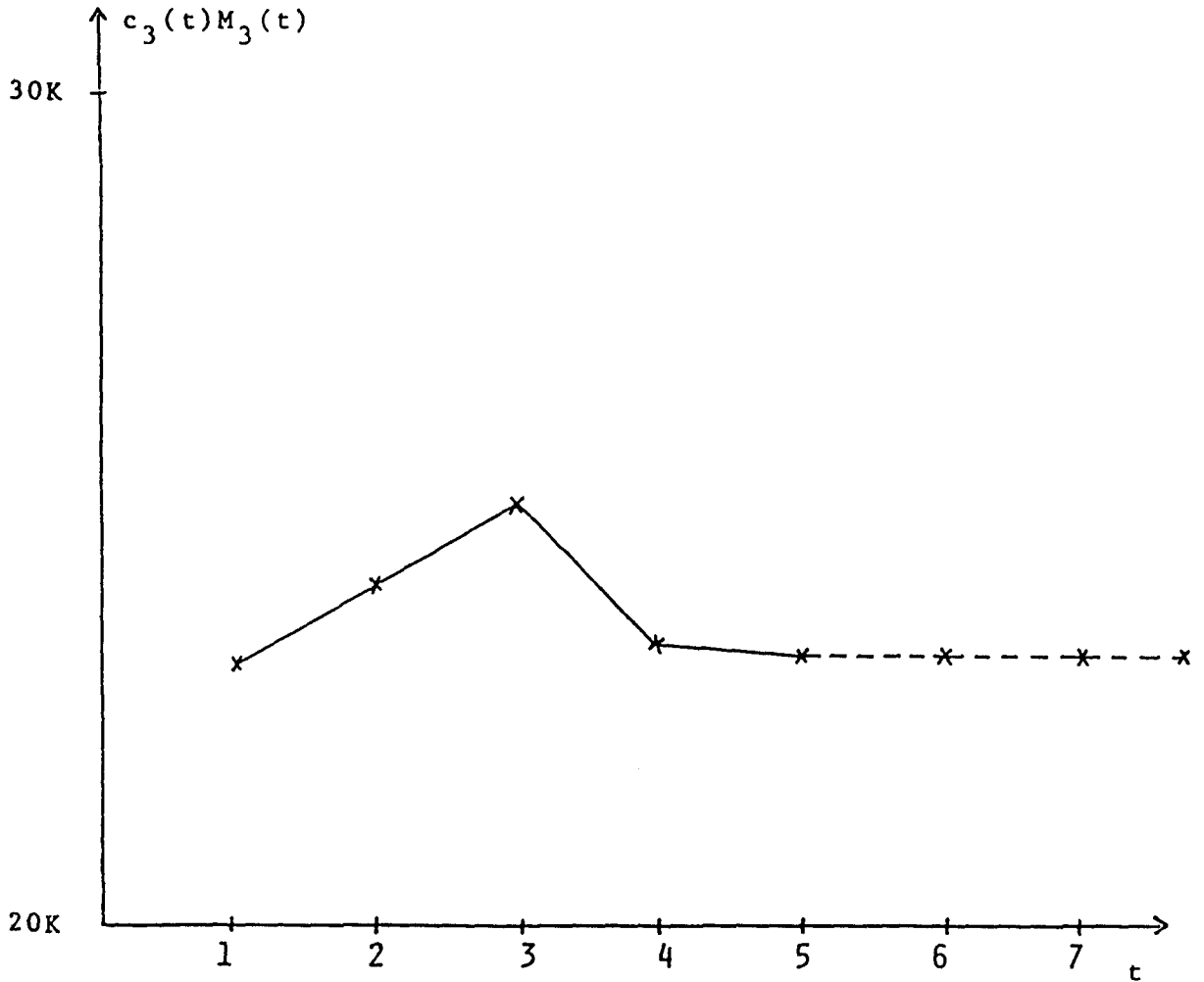




Figure 14 : optimal shares of product group budgets as a function of total communication budget for the company (infinite horizon)

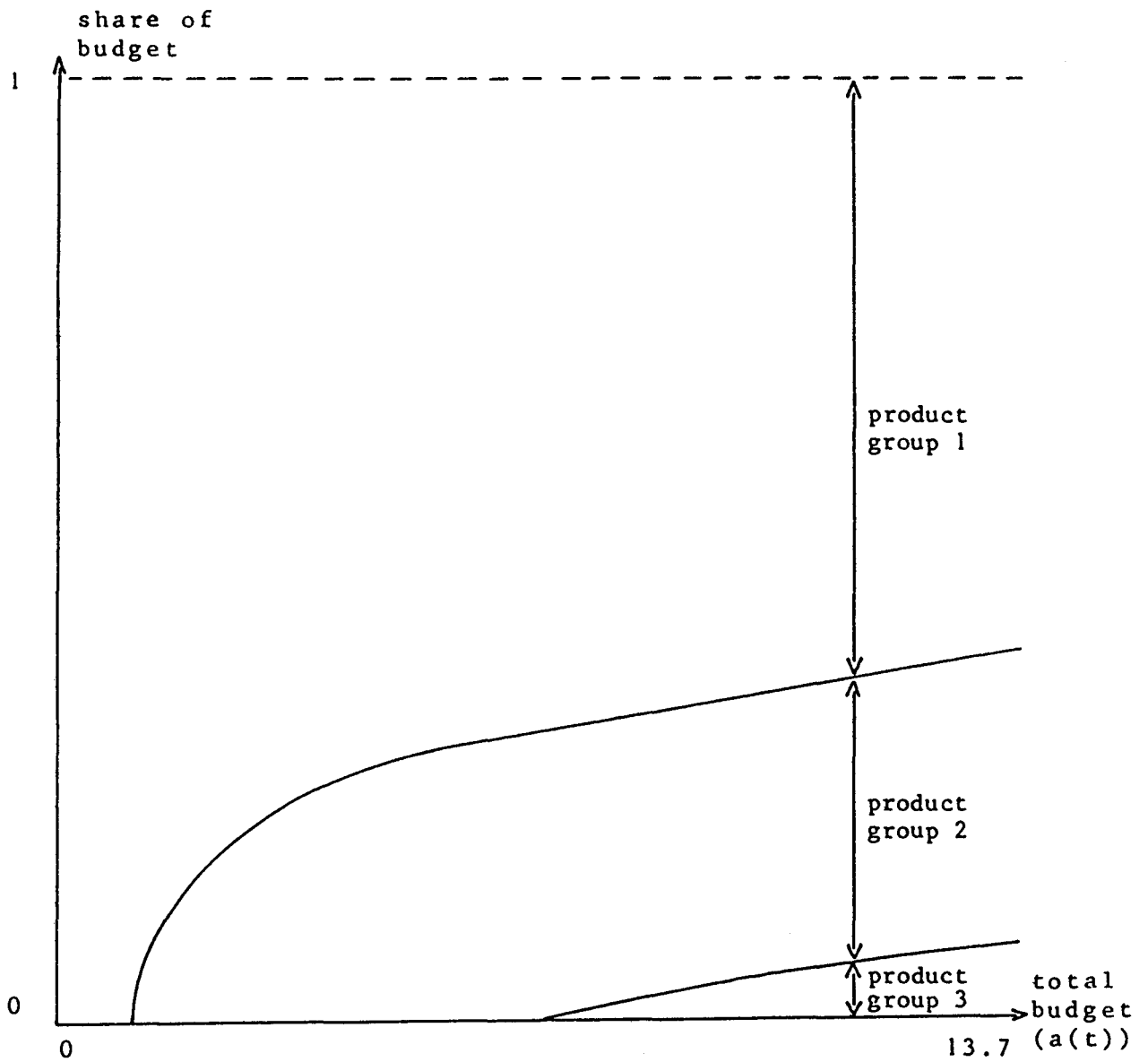
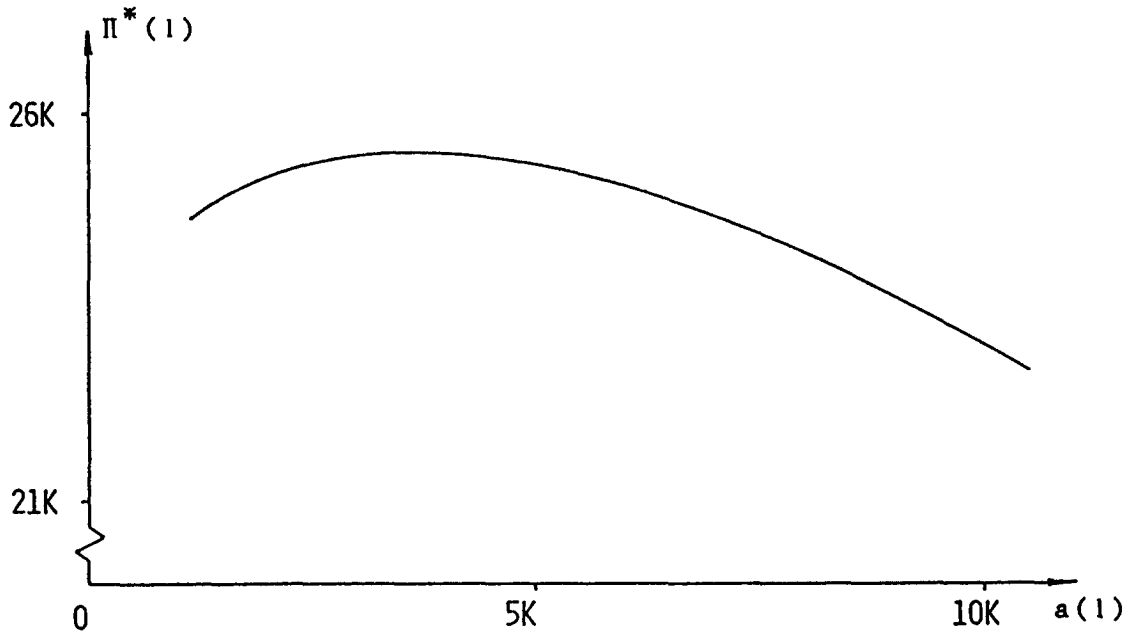


Figure 15 : optimal first year company profit as a function of communication budget in period 1



LIST OF INSEAD RESEARCH WORKING PAPERS

---

- 80/01 "Identifying cognitive style determinants of retail patronage, by Christian PINSON, Arun K. JAIN and Naresh K. MALHOTRA, January 1980.
- 80/02 "Dimensions culturelles des conceptions de management - une analyse comparative internationale", par André LAURENT Février 1980.
- 80/03 "Cognitive style and effective communication", by Arun K. JAIN, Naresh K. MALHOTRA and Christian PINSON, Dec. 1979.
- 80/04 "Accomodative cognitive style differences in consumer reduction of alternatives", by Naresh K. MALHOTRA, Christian PINSON and Arun K. JAIN, October 1979.
- 80/05 "Stability and reliability of Part-Worth utility in conjoint analysis : a longitudinal investigation", by Arun K. JAIN, Naresh K. MALHOTRA and Christian PINSON, September 1979.
- 80/06 "The expected future spot exchange rate, the forward rate, and the trade balance", by Charles A. WYPLOSZ, March 1980.
- 80/07 "Decline and adjustment: Public intervention strategies in the European clothing industries", by José de la TORRE, July 1980.
- 80/08 "The uncommon market: European policies towards a crisis industry - clothing in the 1970's", by José de la TORRE and Michel BACCHETTA, May 1980.
- 80/09 "Stratport: a decision support system for strategic planning", by Jean-Claude LARRECHE and V. SRINIVASAN, April 1980, Revised October 1980.
- 80/10 "A new approach to market segmentation strategy: a banking application", by Arun K. JAIN, Christian PINSON and Naresh K. MALHOTRA, March 1980.

- 80/11 "The exchange and interest rate term structure under risk aversion and rational expectations", by Charles A. WYPLOSZ, Revised Version, September 1980.
- 80/12 "Individual cognitive differences in MDS analysis of perceptions", by Arun K. JAIN, Naresh K. MALHOTRA and Christian PINSON, July 6-12, 1980.
- 80/13 "STRATPORT: A Model for the evaluation and formulation of Business Portfolio Strategies", by Jean-Claude LARRECHE and V. SRINIVASAN, April 1980, Revised November 1980.
- 80/14 "Les styles cognitifs : une nouvelle approche de la segmentation des marchés, by Christian PINSON, Naresh K. MALHOTRA and Arun K. JAIN, Septembre 1980.
- 80/15 "Cognitive styles: A new approach to market segmentation", by Christian PINSON, Naresh K. MALHOTRA and Arun K. JAIN, March 1980.
- 81/01 "Eurobanking, open market operations and the monetary base" by Herwig LANGOHR, August 1980.
- 81/02 "Alternative approaches to the theory of the banking firm: a note" by Herwig LANGOHR, September 1980.
- 81/03 "Why does beta shift when the length of securities returns varies?" by Gabriel HAWAWINI, December 1980.
- 81/04 "Forward market and the cooperative firm" by Gabriel HAWAWINI, January 1981.
- 81/05 "On some propositions regarding the behavior of the labor-managed firm under uncertainty" by Gabriel HAWAWINI, Jan. 1981.
- 81/06 "Impact of the investment horizon on the association between securities' risk and return: theory and tests" by Gabriel HAWAWINI and Ashok VORA, February 1981.
- 81/07 "New evidence on beta stationarity and forecast for Belgian common stocks" by Gabriel A. HAWAWINI and Pierre A. MICHEL, February 1981.

- 81/08 "Industrial policy in the European economic community : Crisis and change", by Kenneth S. COURTIS, June 1980.
- 81/09 "Dogmatism as a moderator of banking behavior and attitudes", by Arun K. JAIN, Christian PINSON and Naresh K. MALHOTRA, March 1981.
- 81/10 "Investment horizon, diversification, and the efficiency of alternative beta forecasts", by Gabriel A. HAWAWINI and Ashok VORA, March 1981.
- 81/11 "Organizational Development & Change", by Claude FAUCHEUX, Gilles AMADO and André LAURENT, April 1981.
- 81/12 "The Pricing of Risky Assets on the Belgian Stock Market" by Gabriel HAWAWINI and Pierre A. MICHEL, May 1981.
- 81/13 "A Test of the Generalized Capital Asset Pricing Model" by Gabriel HAWAWINI and Ashok VORA, May 1981.
- 81/14 "On the History of Yield Approximations" by Gabriel HAWAWINI and Ashok VORA, May 1981.
- 81/15 "Pitfalls of the Global Product Structure" by William H. DAVIDSON and Philippe C. HASPELAGH, May 1981.
- 81/16 "Adjusting Beta Estimates: Real Gains or Illusions?" by Gabriel A. HAWAWINI and Ashok VORA, June 1981.
- 81/17 "Do European Industrial Marketers Budget Differently? an International Comparison via the Advisor Model" by David WEINSTEIN and Gary L. LILIEN, June 1981.
- 81/18 "The Internationalisation of Manufacturing in the Automobile Industry - Some Recent Trends" by Yves L. DOZ, April 1981.
- 81/19 "Portfolio Planning: Use and Usefulness" by Philippe HASPELAGH, May 1981.
- 81/20 "Production Decisions in the Mixed Firm" by Claude VIALLET, Octobre 1981.

- 81/21 "Foreign Investment and Economic Development: Conflict and Negotiation", by José de la TORRE, April 1981.
- 81/22 "Forecasting Country Political Risk" by José de la TORRE and David H. NECKAR, March 1981.
- 81/23 "The Impact of Inflation on Real Variables: A General Equilibrium Approach", by Antonio M. BORGES, November 1981.
- 81/24 "An Assessment of the Risk and Return of French Common Stocks", by Gabriel A. HAWAWINI, Pierre A. MICHEL and Claude J. VIALLET, November 1981.
- 81/25 "Mode de vie et style de vie : Quatre observations sur le fonctionnement des termes" par Jean-François BERNARD-BECHARIES et Christian PINSON.
- 81/26 "Simulating an Oil Shock with Sticky Prices" by Francesco GIAVAZZI, Mehmet ODEKON and Charles WYPLOSZ, November 1981.
- 81/27 "Decomposing the Impact of Higher Energy Prices on Long-Term Growth" by Antonio M. BORGES and Lawrence H. Goulder.
- 81/28 "Forecasting for Industrial Products" by David WEINSTEIN.
- 82/01 "Estimating and Adjusting for the Intervalling-Effect Bias in Beta" by Kalman J. COHEN, Gabriel A. HAWAWINI, Steven F. MAIER, Robert A. SCHWARTZ and David K. WHITCOMB. February 1980, Revised October 1981.
- 82/02 "Friction in the Trading Process and the Estimation of Systematic Risk" by Kalman J. COHEN, Gabriel A. HAWAWINI Steven F. MAIER, Robert A. SCHWARTZ and David K. WHITCOMB. November 1981.
- 82/03 "On the Mathematics of Macaulay's Duration: A Note" by Gabriel A. HAWAWINI. December 1981.
- 82/04 "Systematic Risk, the Investment Horizon, and the Market Index: an Analytical Examination" by Gabriel A. HAWAWINI and Ashok VORA, December 1981.
- 82/05 "Why Beta Estimates Depend upon the Measurement Interval" by Gabriel A. HAWAWINI. January 1982.

- 82/06 "Nationalization, Compensation and Wealth Transfer: an Empirical note about the French Experience" by Herwig LANGOHR and Claude VIALLET, 1981/1982.
- 82/07 "The Keynesian and Classical Determination of the Exchange Rate" by Emil-Maria CLAASSEN, May 1982.
- 82/08 "The Real Exchange Rate, the Current Account and the Speed of Adjustment" by Francesco GIAVAZZI and Charles WYPLOSZ, April 1982.
- 82/09 "Simulation: A Complementary Method for Research on Strategic Decision Making Processes" by Danielle NEES, May 1982.
- 82/10 "The Zero-Root Problem: Dynamic Determination of the Stationary Equilibrium in Linear Models" by Francesco GIAVAZZI and Charles WYPLOSZ, August 1982.
- 82/11 "The Theory of Risk Aversion and Liquidity Preference: A Geometric Exposition" by Gabriel A. HAWAWINI.
- 82/12 "The Effect of Production Uncertainty on the Labor-Managed Firm" by Gabriel A. HAWAWINI and Pierre A. MICHEL.
- 82/13 "On the Independence Between Deposit and Credit Rates" by Jean DERMINE, September 1982.
- 82/14 "Entrepreneurial Activities of INSEAD MBA Graduates" by Lister VICKERY, October 1982.
- 82/15 "Proportional VS. Logarithmic Models of Asset Pricing" by Gabriel A. HAWAWINI, July 1982.
- 82/16 "Capital Controls: Some Principles and the French Experience" by Emil-Maria CLAASSEN and Charles WYPLOSZ, October 1982.
- 82/17 "The Third World's Campaign for a new International Economic Order" by Jan MURRAY, October 1982.
- 82/18 "Extremity of Judgment and Personality Variables: Two Empirical Investigations" by Naresh K. MALHOTRA, Arun K. JAIN and Christian PINSON, April 1982. Revised July 1982.

- 82/19 "Managerial Judgment in Marketing: The Concept of Expertise" by Jean-Claude LARRECHE and Reza MOINPOUR, revised September and December 1982.
- 82/20 "Uncertainty and the Production Decisions of Owner-managed and Labor-managed Firms" by Gabriel HAWAWINI, September 1982.
- 82/21 "Inflation, Taxes and Banks' market Values" by Jean DERMINE, Janvier 1983.
- 82/22 "Bank Regulation and Deposit Insurance: Adequacy and Feasibility" by Jean DERMINE, February 1983 (second draft).
- 82/23 "Pour une étude critique du différentiel sémantique" par Christian PINSON, Avril 1982.
- 83/01 "Comparative Financial Structures: The Impact of Equity in Bank Portfolios" by Herwig LANGOHR, September 1983.
- 84/01 "A Technological Life-Cycle to the Organisational Factors Determining Gatekeeper Activities" by Arnoud DE MEYER, November 1983.
- 84/02 "La Politique Budgétaire et le Taux de Change Reel" par Jeffrey SACHS et Charles WYPLOSZ, Novembre 1983.
- 84/03 "Real Exchange Rate Effects of Fiscal Policy" by Jeffrey SACHS and Charles WYPLOSZ, December 1983.
- 84/04 "European Equity Markets: A Review of the Evidence on Price Behavior and Efficiency" by Gabriel HAWAWINI, February 1984
- 84/05 "Capital Controls and Balance of Payments Crises" by Charles WYPLOSZ, February 1984.
- 84/06 "An Uncertainty Model of the Professional Partnership" by Gabriel HAWAWINI, November 1983.



- 84/07 "The Geometry of Risk Aversion" by Gabriel HAWAWINI, October 1983.
- 84/08 "Risk, Return and Equilibrium of the Nyse: Update, Robustness of Results and Extensions" by Gabriel HAWAWINI, Pierre MICHEL and Claude VIALLET, December 1983.
- 84/09 "Industry Influence on Firm's Investment in Working Capital: Theory and Evidence" by Gabriel HAWAWINI, Claude VIALLET and Ashok VORA, January 1984.
- 84/10 "Impact of The Belgian Financial Reporting Act of 1976 on the Systematic Risk of Common Stocks" by Gabriel HAWAWINI and Pierre MICHEL, January 1984.
- 84/11 "On the Measurement of the Market Value of a Bank" by Jean DERMINE, April 1984.
- 84/12 "Tax Reform in Portugal: a General Equilibrium Analysis of the Introduction of a Value Added Tax" by Antonio M. BORGES December 1984.
- 84/13 "Integration of Information Systems in Manufacturing" by Arnoud DE MEYER and Kasra FERDOWS, December 1984.
- 85/01 "The Measurement of Interest Rate Risk by Financial Intermediaries" by Jean DERMINE, December 1983, revised December 1984.
- 85/02 "Diffusion Model for New Product Introduction in Existing Markets" by Philippe Naert and Els Gijsbrechts.

# EURO-ASIA CENTR

---

## INSEAD

Institut Européen d'Administration des Affaires  
European Institute of Business Administration  
Europäisches Institut für Unternehmensführung  
Institut Privé d'Enseignement Supérieur

Boulevard de Constance  
77305 Fontainebleau Cedex, France  
Telephone (6) 422 48 27 Telex 690389F

---

EAC Publications List  
Update September 1982

### E A C BRIEFING PAPERS

N°1. Strategies and Practices of Transfer of Technology from European to Asean Enterprises.

Philippe LASSERRE and Max BOISOT. April 1980. 30 p.

N°2. The Partners of Foreign Investors in Indonesia : the Tip of the Ethnic Iceberg. (working draft)

Stephen C. HEADLEY. December 1980. 21 p.

N°3. Foreword to Government-Business Relations in Indonesia. (working draft)

Stephen C. HEADLEY. December 1980. 17 p.

N°4. Personnel Management in Indonesia : How ? (working draft)

Stephen C. HEADLEY. December 1980. iv, 16 p.

N°5. Can you work for Honda and remain yourself ? The Cultural Dimensions of Indonesian Management. (working draft)

Stephen C. HEADLEY. December 1980. 17 p.

N°6. The Context of Management Development in Malaysia.

Bryony CONWAY. December 1980. 17 p.

N°7. Racial Balance in Management in Malaysia.

Bryony CONWAY. December 1980. 13 p.

N°8. Appropriate Education for Management in Malaysia.

Bryony CONWAY. December 1981. 10 p.

N°9. Foreign Enterprise and Management Development in Malaysia.

Bryony CONWAY. November 1981. 8 p.

N°10 The Chinese Malaysian Enterprise.

Bryony CONWAY. June 1982. 12p.

E A C RESEARCH PAPERS

N°1. A Contribution to the Study of Entrepreneurship Development in Indonesia.

Philippe LASSERRE. April 1979 (corrected version 1980).  
72, 7 p. (limited distribution)

N°2. The Transfer of Technology from European to Asean Enterprises : Strategies and Practices in the Chemical and Pharmaceutical Sectors.

Philippe LASSERRE and Max BOISOT. February 1980. 109, VI p.

N°3. Possibilité d'un transfert à l'étranger des techniques japonaises de gestion : le cas français.

Tetsuo AMAKO. July 1982. 145 p.

## E A C REPRINTS

- N°1. Japanese Organizational Behaviour : A Psychocultural Approach.

Henri-Claude de BETTIGNIES. February 1981.

Reproduced from : Management Research: A Cross-Cultural Perspective.

Edited by Desmond Graves. Amsterdam, London, New York: Elsevier Scientific Publishing Company, 1973. pp. 75-93.

- N°2. The Transfer of Management Know-How in Asia : An Unlearning Process.

Henri-Claude de BETTIGNIES. February 1981.

Reproduced from : Breaking down Barriers: Practice and Priorities for International Management Education.

Edited by Bob Garratt and John Stopford. London: Gower for the Association of Teachers of Management, 1980. pp. 293-310.

- N°3. Korean Management in the 1980's : The International Challenge.

Henri-Claude de BETTIGNIES. February 1981.

Reproduced from : The Korean Journal of International Business. Vol. 1. International Management Institute, Korea University, Seoul, July 1980. pp. 119-125.

- N°4. La Sociologie des organisations : Le cas du Japon

Henri-Claude de BETTIGNIES. February 1981.

Reproduced from : Les Etudes Japonaises en France. Colloque, oct. 1979.

Paris : Association pour l'Etude de la Langue et la Civilisation Japonaise, 1980. pp. 118-130.

N°5. Analyse des craintes françaises.

Henri-Claude de BETTIGNIES. February 1981.  
Reproduced from : Revue Française de Gestion. N° 27-28,  
sept-oct. 1980.  
Numéro spécial : Le Japon Mode ou Modèle ? pp. 16-23.

N°6. L'Indonésie et ses Potentiels

Philippe LASSERRE. May 1981.  
Reproduced from : Marchés Internationaux N° 51, mai 1981.  
pp. 83-98.

N°7. Transferts de Technologie : des mariages difficiles.

Philippe LASSERRE. May 1981.  
Reproduced from : Revue Française de Gestion, N° 30  
mars-avril 1981. pp. 97-103

N°8. The Industrialising Countries of Asia : Perspectives and Opportunities.

Philippe LASSERRE. July 1981.  
Reproduced from : Long Range Planning Vol 14 N° 3, June 1981.  
pp. 36-43.

N°9. Le Japon prépare ses managers de demain à l'école de l'Occident.

Jacques de RUGY. July 1981.  
Reproduced from : France Japon éco N°9, automne 1981, pp.  
10-21.

N° 10. Quand les entreprises japonaises intègrent la gestion américaine.

Tetsuo AMAKO. July 1982.  
Reproduced from : Revue Française de Gestion N° 35,  
mars-avril 1982, pp 59-63 + 10 p. annexes.

N° 11. Training : key to technological transfer.

Philippe LASSERRE. July 1982.  
Reproduced from : Long Range Planning, vol 15 N° 3,  
June 1982. pp. 51-60

# EURO-ASIA CENTRE

---

## INSEAD

Institut Européen d'Administration des Affaires  
European Institute of Business Administration  
Europäisches Institut für Unternehmensführung

Institut Privé d'Enseignement Supérieur

Boulevard de Constance

77305 Fontainebleau Cedex, France

Telephone (6) 422 48 27 Telex 690389F

---

Update September 1982

### EAC DOCUMENTATION SERIES

- N°1. A bibliography on Japan: holding list of the Euro-Asia Centre and INSEAD library. May 1980.- 55 p.-
- N°1 bis. A bibliography on Japan: resources of the Euro-Asia Centre and INSEAD library: new additions.- July 1981.- 28 p.-
- N°2. A bibliography on ASEAN countries: holding list of the Euro-Asia Centre and INSEAD library. July 1980.- 79 p.-
- N°3. A bibliography on East and Northeast Asia: holding list of the Euro-Asia Centre and INSEAD library. July 1980.- 30 p.-
- N°4. A bibliography on the People's Republic of China: Resources of the Euro-Asia Centre and INSEAD library. October 1981.- 15 p.-
- N°5. A bibliography on ASEAN and ASEAN countries : Resources of the Euro-Asia Centre and INSEAD Library. October 1981.- 77 p.-
- N°6. A bibliography on South Korea, Hong Kong and Taiwan : Resources of the Euro-Asia Centre and INSEAD Library. January 1982.- 22 p.-
- N°7. A bibliography on Asia : Resources of the Euro-Asia Centre and INSEAD Library. February 1982.- 25 p.-
- N°8. A bibliography on Japan : Resources of the Euro-Asia Centre and INSEAD Library. July 1982.- 108 p.-
- N°9. A bibliography on the People's Republic of China : Resources of the Euro-Asia Centre and INSEAD Library. August 1982.- 18 p.